



Price
£300,000

Freehold

3x  1x  1x 

**Swan Street, Newport,
Isle of Wight, PO30**

Pittis 
Helping you move forwards



Main features

- Newly built detached house never been lived in!
- Fitted kitchen with integral appliances
- Energy efficient bio mass heating system
- Built in wardrobes to all bedrooms
- Enclosed rear garden, driveway parking and a garage

Accommodation

GROUND FLOOR

Hallway

Kitchen / Diner: 15'9 x 10'2 (4.80m x 3.10m)

Lounge: 15'9 x 10'10 (4.80m x 3.30m)

Cloakroom

FIRST FLOOR

Landing

Bedroom 1: 15'6 x 10'8 (4.73m x 3.25m)

Bedroom 2: 9'7 x 9'3 (2.92m x 2.82m)

Bedroom 3: 9'7 x 6'3 (2.92m x 1.91m)

Bathroom

OUTSIDE

Front Garden

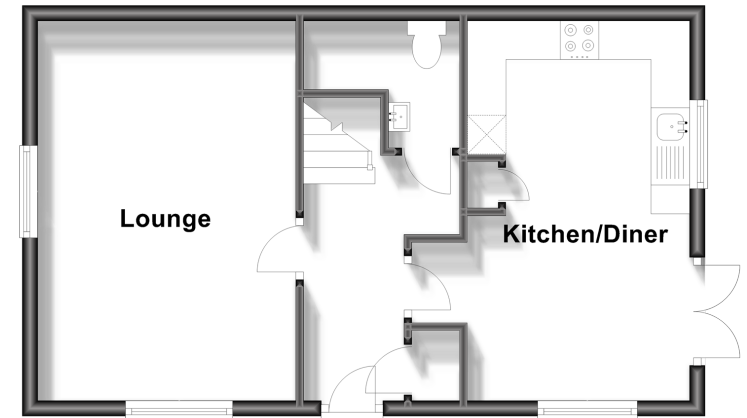
Driveway

Garage

Rear Garden

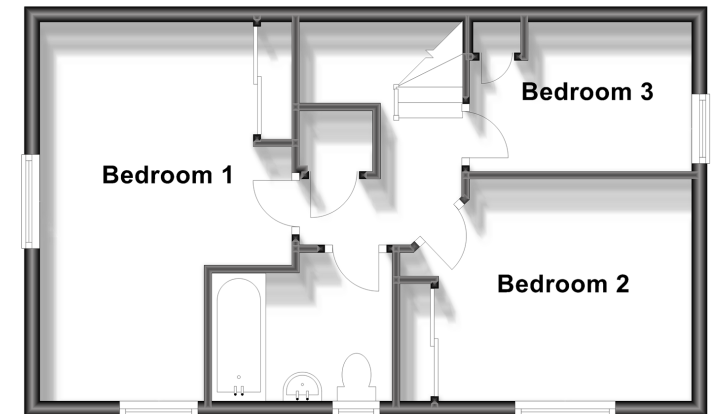
Ground Floor

Approx. 41.5 sq. metres (447.2 sq. feet)



First Floor

Approx. 41.5 sq. metres (447.2 sq. feet)



Call Newport - 01983 528888 ■ pittis.co.uk

- Legal advice should be taken to verify fixtures/fittings, planning, alterations and/or lease details
- Appliances & services are untested, dimensions are approximate and floor plans are not to scale



60323463/20230918/DN/NH