



Guide Price
£250,000

Freehold

3x  1x  2x 

**Arnhem Road,
Freshwater, Isle of
Wight, PO40**

OVER 60?

Secure this property
for up to **59% less!**

Pittis 
Helping you move forwards



Main features

- Large family house with fantastic front & rear sized gardens
- Potential for mixed generational living
- Large conservatory leading into the garden
- Required modernisation offers a great family project
- Close to Freshwater & bus routes

Accommodation

GROUND FLOOR

Entrance Hall
 Lounge: 12'0 x 11'2 (3.66m x 3.41m)
 Kitchen: 15'0 x 10'1 (4.58m x 3.08m)
 Cloakroom
 Study/ Guest Room: 11'6 x 10'2 (3.51m x 3.10m)
 Study: 11'0 x 10'0 (3.36m x 3.05m)
 Garden Room: 13'2 x 12'9 (4.02m x 3.89m)

FIRST FLOOR

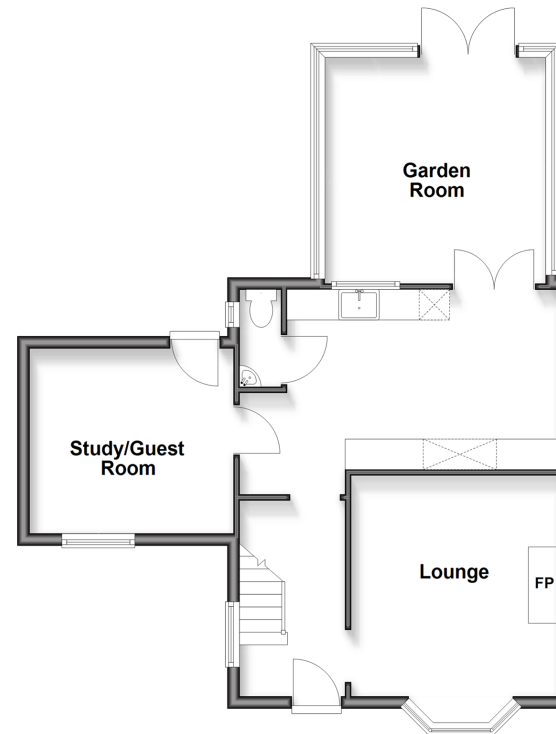
Landing
 Separate Toilet: 4'4 x 2'7 (1.32m x 0.79m)
 Bathroom: 6'1 x 5'7 (1.86m x 1.70m)
 Bedroom 1: 12'8 x 12'3 (3.86m x 3.74m)
 Bedroom 2: 11'4 x 10'0 (3.46m x 3.05m)

OUTSIDE

Front Garden
 Rear Garden
 Shed

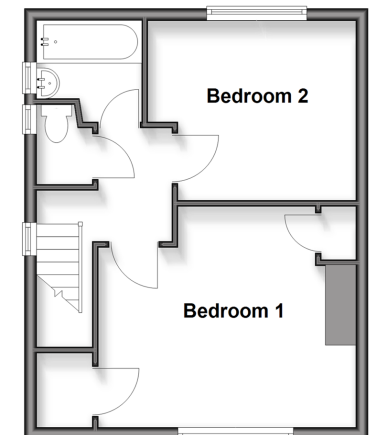
Ground Floor

Approx. 59.2 sq. metres (637.6 sq. feet)



First Floor

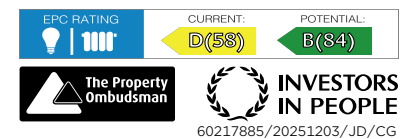
Approx. 34.9 sq. metres (375.4 sq. feet)



Call Freshwater - 01983 756222 ■ pittis.co.uk

■ Legal advice should be taken to verify fixtures/fittings, planning, alterations and/or lease details
 ■ Through a Homewise Home For Life Plan people aged 60+ can secure this property for up to 50% less, by purchasing a Lifetime Lease

■ Appliances & services are untested, dimensions are approximate and floor plans are not to scale



60217885/20251203/JD/CG