

OVER 60?

Secure this property
for up to **59% less!**



Guide Price
£385,000
Freehold

2x  1x  2x 

Warlands Lane, Shalfleet, Newport, Isle of
Wight, PO30

Pittis 
Helping you move forwards



Main features

- Tucked away, country location whilst a short drive to Newport & Yarmouth
- Large conservatory on the rear, opening onto a sunny garden
- Open kitchen dining area great; for entertaining friends & family
- Wrap around gardens, perfect for keen gardeners
- Off road parking & detached garage

Accommodation

GROUND FLOOR

Hallway

Kitchen: 11'8 x 9'6 (3.56m x 2.90m)

Dining Area: 11'7 x 9'5 (3.53m x 2.87m)

Lounge: 12'5 x 11'8 (3.79m x 3.56m)

Cloakroom

Bedroom 1: 13'9 x 11'9 (4.19m x 3.58m)

Bedroom 2: 11'9 x 9'9 (3.58m x 2.97m)

Shower Room: 7'9 x 6'7 (2.36m x 2.01m)

Conservatory: 18'5 x 10'9 (5.62m x 3.28m)

OUTSIDE

Driveway

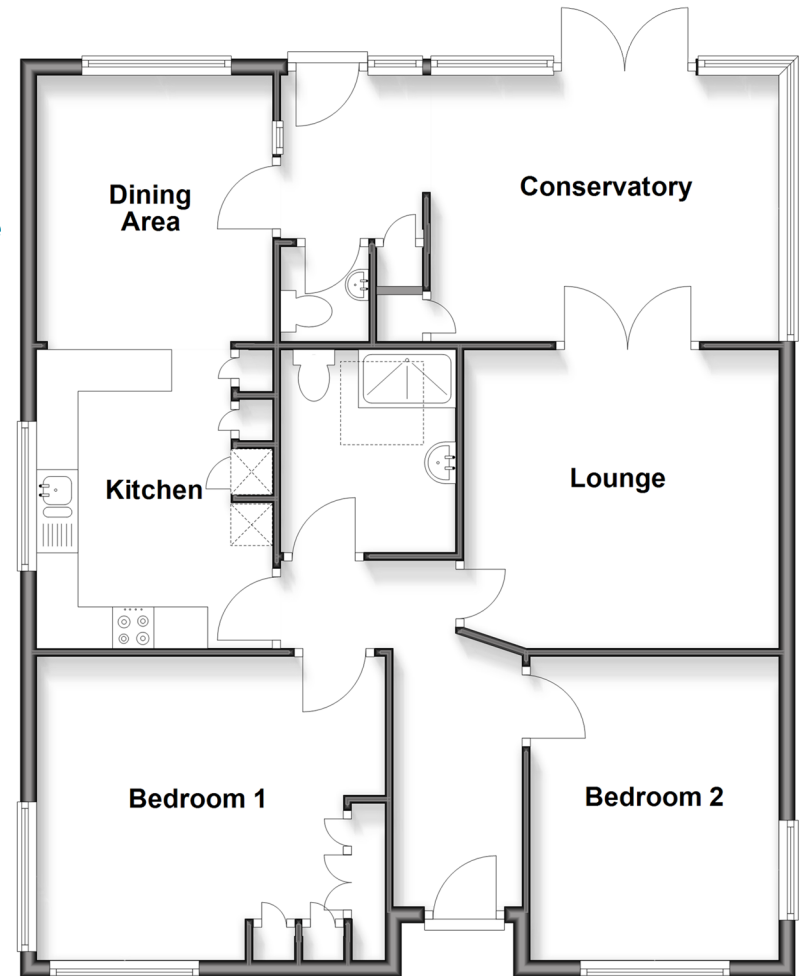
Detached Garage

Front Garden

Rear Garden

Greenhouse

Ground Floor
Approx. 94.1 sq. metres (1012.8 sq. feet)



Call Freshwater - 01983 756222 ■ pittis.co.uk

- Legal advice should be taken to verify fixtures/fittings, planning, alterations and/or lease details
- Appliances & services are untested, dimensions are approximate and floor plans are not to scale
- Through a Homewise Home For Life Plan people aged 60+ can secure this property for up to 50% less, by purchasing a Lifetime Lease.