



Price

£160,000

Leasehold

2x  1x  1x 

**Brooklands, Queens
Road, Freshwater, Isle
of Wight, PO40**

OVER 60?

Secure this property
for up to **59% less!**

Pittis 
Helping you move forwards



Main features

- Ground floor apartment with front courtyard garden
- Allocated parking
- Perfect for Buy to Let or First Time Buyers
- In the heart of Freshwater Village
- Short walk to countryside across bridle paths to Middleton

Accommodation

GROUND FLOOR

Entrance Hallway

Bedroom 2: 13'2 x 8'6 (4.02m x 2.59m)

Kitchen: 12'6 x 8'7 (3.81m x 2.62m)

Bedroom 1: 11'6 x 10'1 (3.51m x 3.08m)

Bathroom: 7'8 x 5'8 (2.34m x 1.73m)

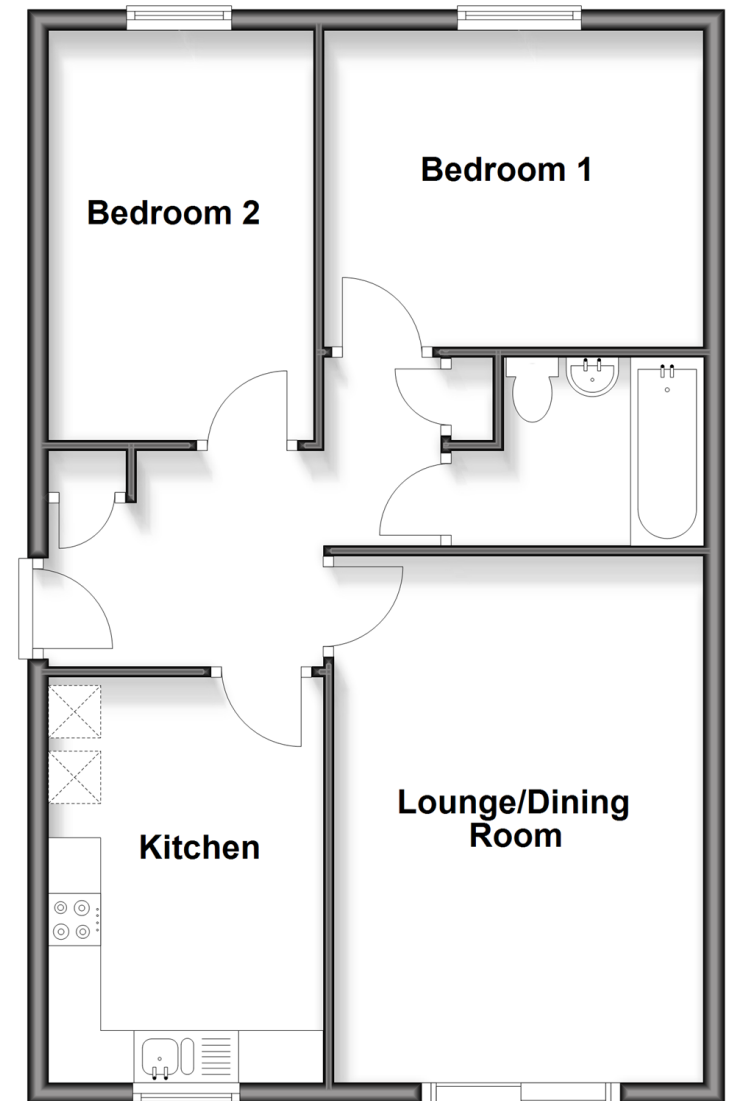
Lounge/Dining Room: 15'9 x 11'6 (4.80m x 3.51m)

OUTSIDE

Front Garden

Ground Floor

Approx. 63.1 sq. metres (678.8 sq. feet)



Call Freshwater - 01983 756222 ■ pittis.co.uk

- Legal advice should be taken to verify fixtures/fittings, planning, alterations and/or lease details
- Appliances & services are untested, dimensions are approximate and floor plans are not to scale
- Through a Homewise Home For Life Plan people aged 60+ can secure this property for up to 59% less, by purchasing a Lifetime Lease.



60218600/20250802/CG/CG