



Guide Price
£350,000

Freehold

3x  2x  1x 

**Sunnybank Cottages,
Church Hill, Totland Bay,
Isle of Wight, PO39**

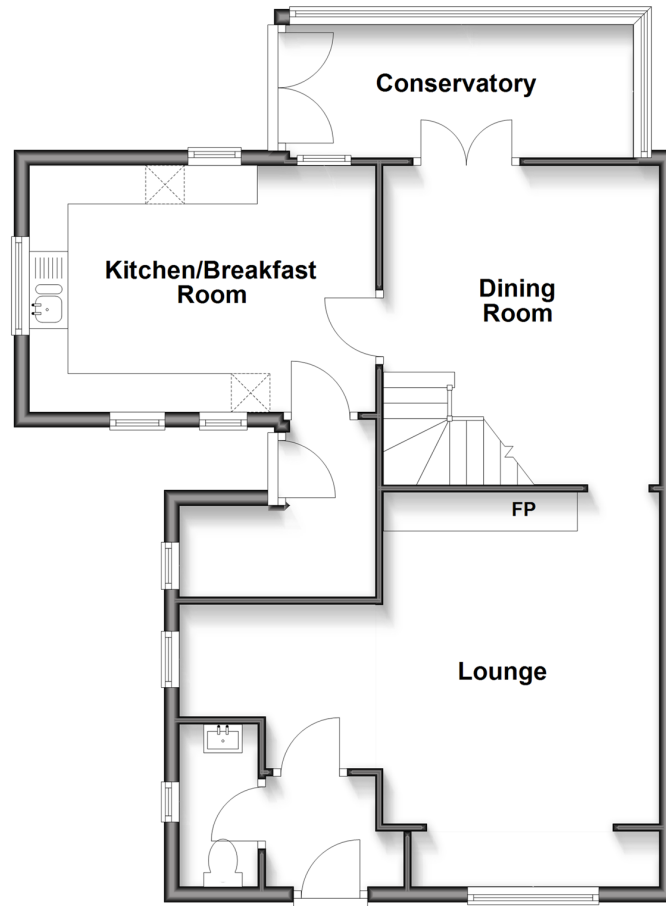
OVER 60?

Secure this property
for up to **59% less!**

Pittis 
Helping you move forwards

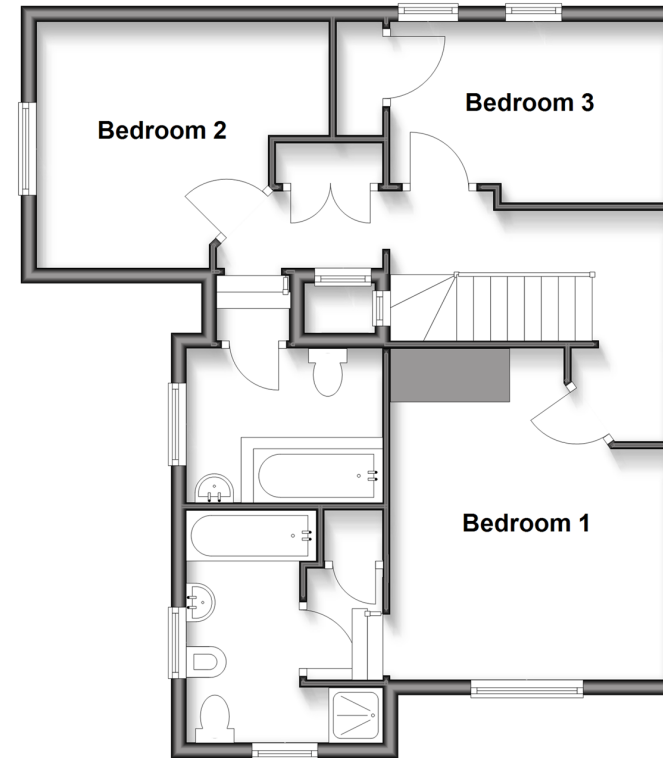
Ground Floor

Approx. 71.1 sq. metres (765.5 sq. feet)



First Floor

Approx. 59.9 sq. metres (644.7 sq. feet)



Accommodation

GROUND FLOOR

Entrance Hall
Downstairs Cloakroom: 6'3 x 2'8 (1.91m x 0.81m)
Lounge: 20'6 x 15'5 (6.25m x 4.70m)
Dining Area: 13'7 x 11'7 (4.14m x 3.53m)
Kitchen: 14'9 x 10'7 (4.50m x 3.23m)
Conservatory: 14'3 x 6'3 (4.35m x 1.91m)
Utility Room: 7'7 x 5'4 (2.31m x 1.63m)

FIRST FLOOR

Landing
Bedroom 1: 12'3 x 12'1 (3.74m x 3.69m)
En-Suite: 10'6 x 5'0 (3.20m x 1.53m)
Bedroom 2: 10'9 x 9'9 (3.28m x 2.97m)
Bathroom: 8'7 x 6'7 (2.62m x 2.01m)
Bedroom 3: 12'2 x 7'6 (3.71m x 2.29m)

OUTSIDE

Driveway
Front Garden
Rear Garden



Main features

- Charming semi-detached home with wrap around gardens
- Log burner open to both lounge and dining area
- Off road parking for ample vehicles
- Within short walk to Totland Pier and local amenities
- Long distance views from upstairs bedrooms across Afton Downs



Nearest Schools

St. Saviour's Catholic Primary School
Freshwater and Yarmouth C of E Primary School
Christ the King College, Newport
Carisbrooke College, Newport
Isle of Wight College, Newport



Transport Information

There is a local bus service to all parts of the Island including the ferry terminus at Yarmouth. Plus, local weekday service of the FYT bus.



Address

Sunnybank Cottages, Church Hill, Totland Bay, Isle of Wight, PO39



Directions

For directions to this property please contact us.

