



Price
£385,000

Freehold

2x  2x  1x 

**Headon Cottages, Alum
Bay, Totland Bay, Isle of
Wight, PO39**

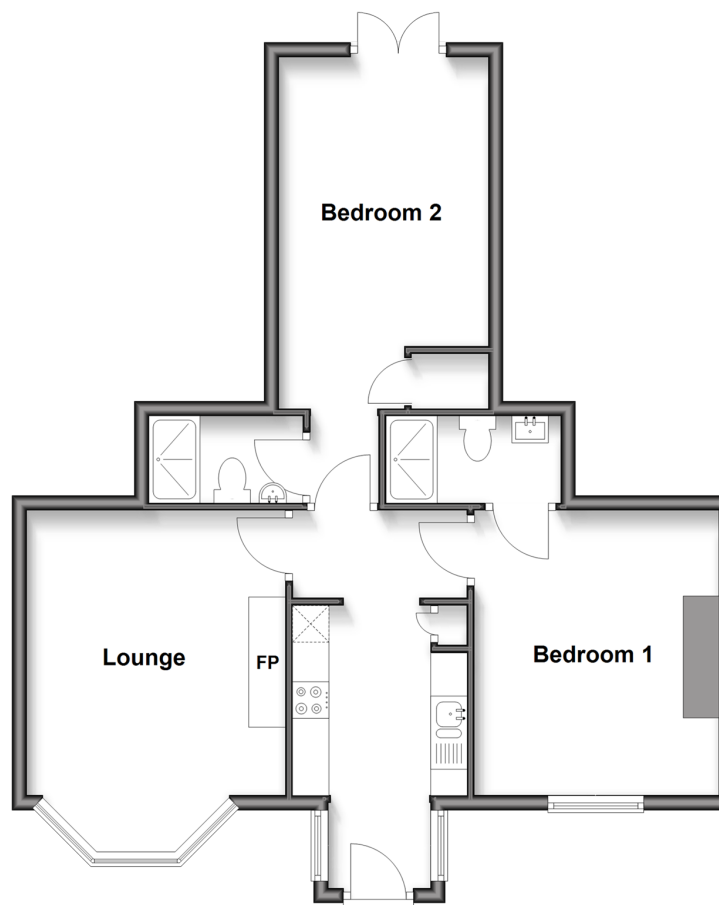
OVER 60?

Secure this property
for up to **59% less!**

Pittis 
Helping you move forwards

Ground Floor

Approx. 60.7 sq. metres (653.2 sq. feet)



Accommodation

GROUND FLOOR

Oak Porch

Kitchen: 9'8 x 7'8 (2.95m x 2.34m)

Lounge: 17'1 x 10'5 (5.21m x 3.18m)

Bedroom 2: 16'0 x 9'4 (4.88m x 2.85m)

En-suite Shower Room

Bedroom 1: 13'1 x 10'9 (3.99m x 3.28m)

En-suite Shower Room: 7'8 x 3'8
(2.34m x 1.12m)

OUTSIDE

Allocated Parking

Front Garden

Rear Courtyard Garden



Main features

- Mid terrace bungalow with en-suites
- Iconic views of The Needles
- Perfect lock up and leave or a holiday home
- Large grounds and private beach around the Headon Cottages Community
- Coastal and country walks on the doorstep



Nearest Schools

St. Saviour's Catholic Primary School
Freshwater and Yarmouth C of E Primary School
Christ the King College, Newport
Carisbrooke College, Newport
Isle of Wight College, Newport



Transport Information

There is a local bus service to all parts of the Island including the ferry terminus at Yarmouth. Plus, local weekday service of the FYT bus.



Address

Headon Cottages, Alum Bay, Totland Bay, Isle of Wight, PO39



Directions

For directions to this property please contact us.

