



Price
£360,000

Freehold

3x  1x  2x 

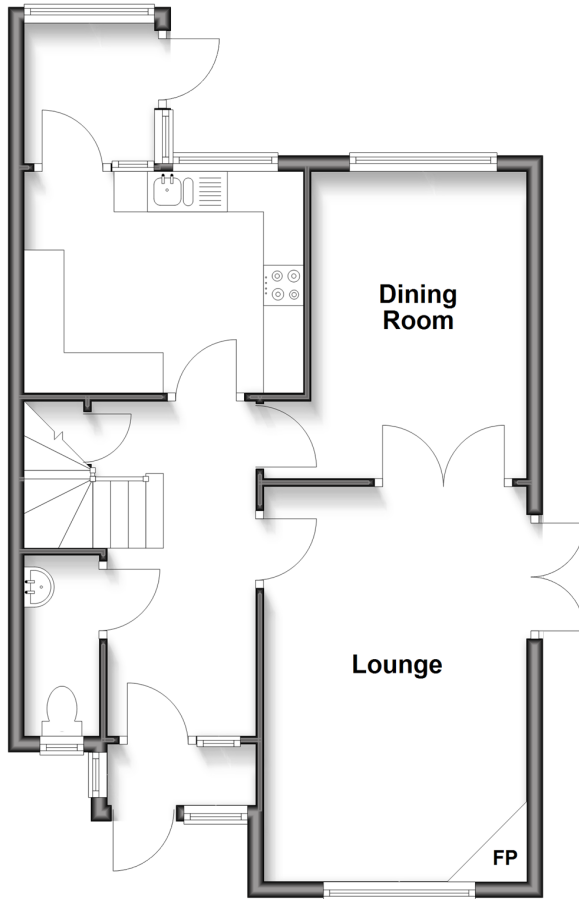
**St. Michael's Close,
Shalfleet, Newport, Isle
of Wight, PO30**

OVER 60?

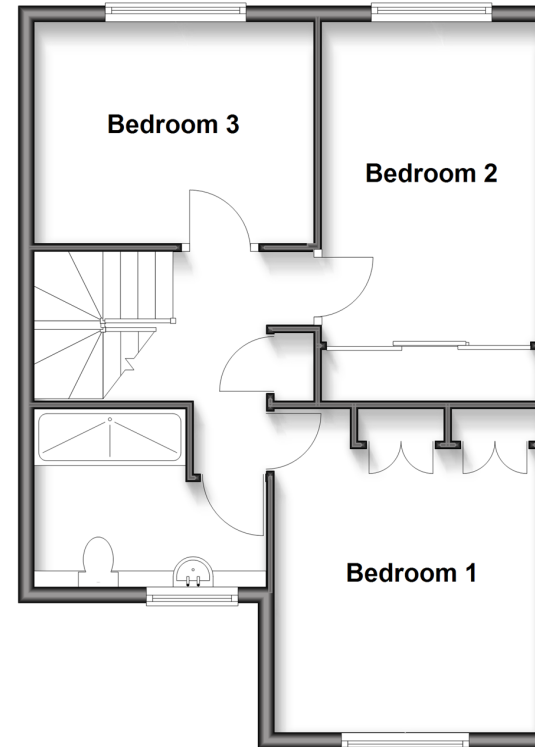
Secure this property
for up to **59% less!**

Pittis 
Helping you move forwards

Ground Floor
Approx. 54.8 sq. metres (590.0 sq. feet)



First Floor
Approx. 50.1 sq. metres (539.5 sq. feet)



Accommodation

GROUND FLOOR

Entrance Hall
Lounge: 15'9 x 10'9 (4.80m x 3.28m)
Cloakroom: 7'1 x 2'7 (2.16m x 0.79m)
Dining Room: 12'5 x 8'8 (3.79m x 2.64m)
Kitchen: 11'3 x 9'3 (3.43m x 2.82m)
Utility Area

FIRST FLOOR

Landing
Bedroom 1 : 11'11 x 11'4 (3.63m x 3.46m)
Shower Room
Bedroom 2: 12'8 x 8'8 (3.86m x 2.64m)
Bedroom 3: 11'4 x 9'0 (3.46m x 2.75m)

OUTSIDE

Garage en bloc
Front Garden
Rear Garden
Side Garden
Hot Tub
Summer House
Garden Shed



Main features

- Semi-detached home in a peaceful, countryside setting
- Mature garden perfect for sun seekers and gardeners
- Generous sized property with cosy modern log burner
- Garage en bloc and short walk to village
- Tastefully decorated and modernised in light, airy way



Nearest Schools

St. Saviour's Catholic Primary School
Freshwater and Yarmouth C of E Primary School
Christ the King College, Newport
Carisbrooke College, Newport
Isle of Wight College, Newport



Transport Information

There is a local bus service to all parts of the Island including the ferry terminus at Yarmouth.



Address

St. Michael's Close, Shalfleet, Newport, Isle of Wight, PO30



Directions

For directions to this property please contact us.

