

OVER 60?

Secure this property
for up to **59% less!**



Price
£370,000
Freehold

4x  2x  1x 

Limerstone, Newport, Isle of Wight, PO30

Pittis 
Helping you move forwards



Main features

- This chalet bungalow is in a countryside location
- Upgrading required throughout, ideal project
- Studio in the garden perfect for an artist or get away
- Off road parking, wrap around gardens and water feature

Accommodation

GROUND FLOOR

Entrance Hall

Dining Area: 11'3 x 10'10 minimum (3.43m x 3.30m)

Kitchen: 14'2 x 11'1 (4.32m x 3.38m)

Conservatory: 19'0 x 7'8 (5.80m x 2.34m)

Cloakroom

Bathroom

Bedroom 1 : 15'0 at widest point x 12'9 up to fitted wardrobes (4.58m x 3.89m)

Bedroom 2 : 8'10 x 6'5 (2.69m x 1.96m)

Lounge : 18'8 x 13'7 (5.69m x 4.14m)

FIRST FLOOR

Landing

Bedroom 3: 12'8 x 8'1 (3.86m x 2.47m)

Bathroom

Sitting Area: 9'2 x 5'6 (2.80m x 1.68m)

Kitchenette area

OUTSIDE

Front Garden

Off-Road Parking

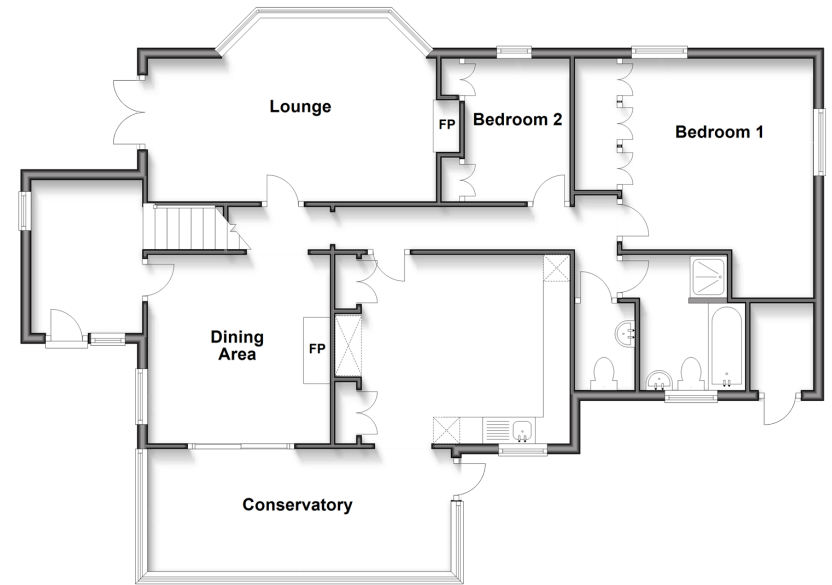
Garage

Rear Garden

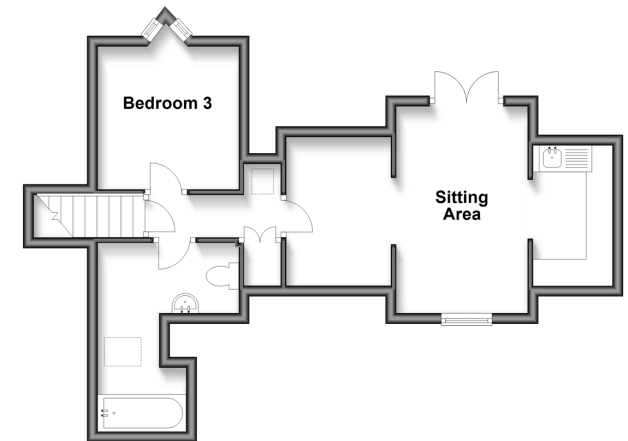
Call Freshwater - 01983 756222 ■ pittis.co.uk

- If buying to let, the energy rating will need to be improved to at least 'E' rating before you can let the property
- Legal advice should be taken to verify fixtures/fittings, planning, alterations and/or lease details
- Appliances & services are untested, dimensions are approximate and floor plans are not to scale
- Through a Homewise Home For Life Plan people aged 60+ can secure this property for up to 59% less, by purchasing a Lifetime Lease.

Ground Floor
Approx. 108.3 sq. metres (1165.5 sq. feet)



First Floor
Approx. 39.8 sq. metres (428.8 sq. feet)



60217586/20250415/JD/CG