

OVER 60?

Secure this property
for up to **59% less!**



Guide Price
£395,000
Freehold

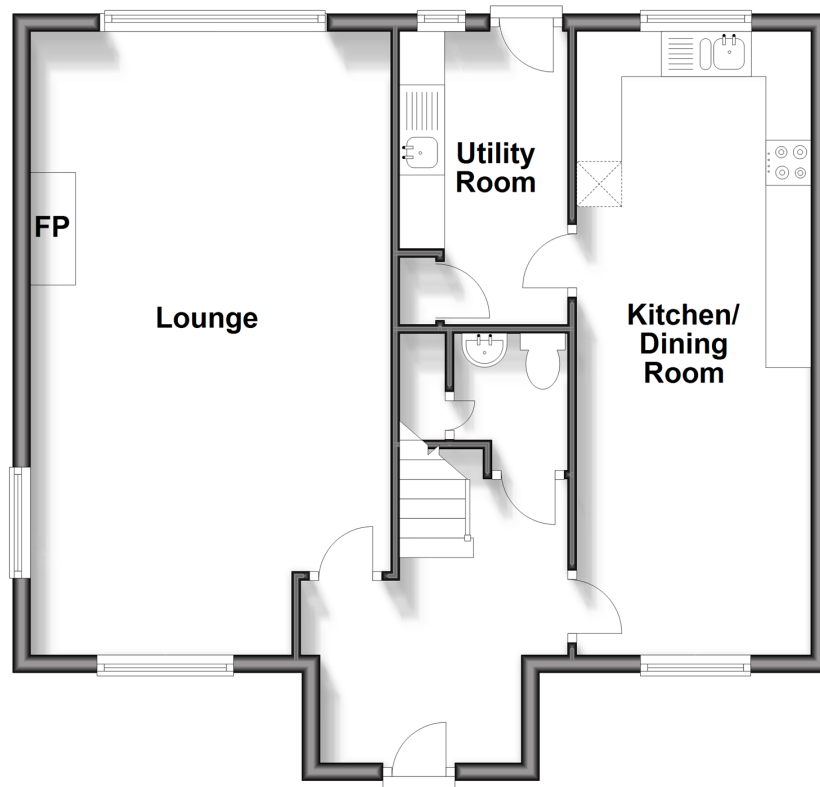
4x  2x  1x 

St. Mary's Court, Main Road, Brighstone,
Newport, Isle of Wight, PO30

Pittis 
Helping you move forwards

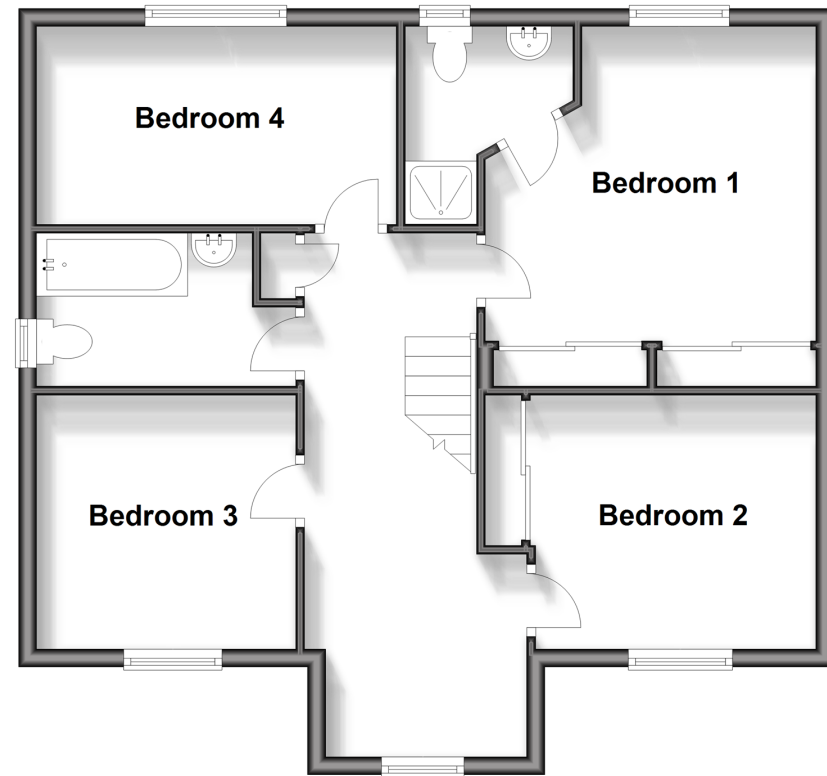
Ground Floor

Approx. 62.6 sq. metres (673.9 sq. feet)



First Floor

Approx. 62.6 sq. metres (673.9 sq. feet)



Accommodation

GROUND FLOOR

Entrance Hall

Lounge: 22'7 x 13'0 (6.89m x 3.97m)

Kitchen / Dining Room: 22'5 x 8'5
(6.84m x 2.57m)

Utility Room: 10'5 x 6'11 (3.18m x 2.11m)

Cloakroom

FIRST FLOOR

Landing

Bedroom 1: 11'7 x 11'4 (3.53m x 3.46m)

En-Suite

Bedroom 4: 13'0 x 7'3 (3.97m x 2.21m)

Bedroom 3: 9'5 x 9'0 (2.87m x 2.75m)

Bedroom 2: 9'8 x 8'9 (2.95m x 2.67m)

Bathroom: 9'5 x 5'5 (2.87m x 1.65m)

OUTSIDE

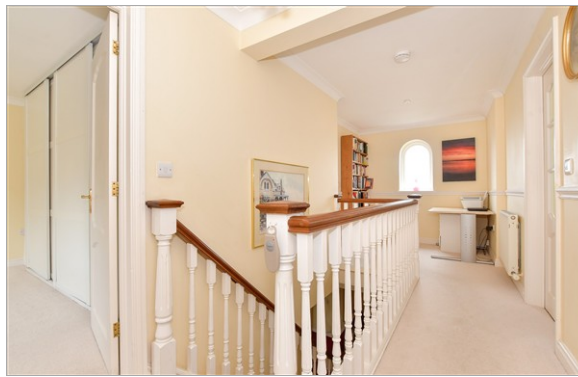
Garage

Front garden

Side Garden

Rear Garden

Driveway



Main features

- Lovely detached home with great internal space throughout, offering flexible living
- Detached garage and driveway
- Charming kerb appeal in a period village
- Good transport links to both Freshwater and Newport
- Close to school, village shops and local amenities



Nearest Schools

Brighstone C of E Primary School
Shalfleet Primary School
St. Saviour's Catholic Primary School
Freshwater and Yarmouth C of E Primary School
Christ the King College, Newport



Transport Information

There is a local bus service to all parts of the Island including the ferry terminus at Yarmouth.



Address

St. Mary's Court, Main Road, Brighstone, Newport, Isle of Wight, PO30



Directions

For directions to this property please contact us.

