



Price

£185,000

Leasehold

2x  1x  1x 

Linstone, Colwell Road,
Freshwater, Isle of
Wight, PO39

OVER 60?

Secure this property
for up to **59% less!**


Pittis
Helping you move forwards



Main features

- Ground floor apartment with open plan living
- Spacious accommodation and plenty of storage
- Garden to the rear of the property perfect for soaking up the sun
- In walking distance to Freshwater village and Colwell Bay
- Off road parking

Accommodation

GROUND FLOOR

Hallway

Lounge/Dining Room: 22'0 x 12'4
(6.71m x 3.76m)

Kitchen: 8'7 x 4'10 (2.62m x 1.47m)

Shower Room

Bedroom 1: 11'10 x 8'10 (3.61m x 2.69m)

Bedroom 2: 8'4 x 7'6 (2.54m x 2.29m)

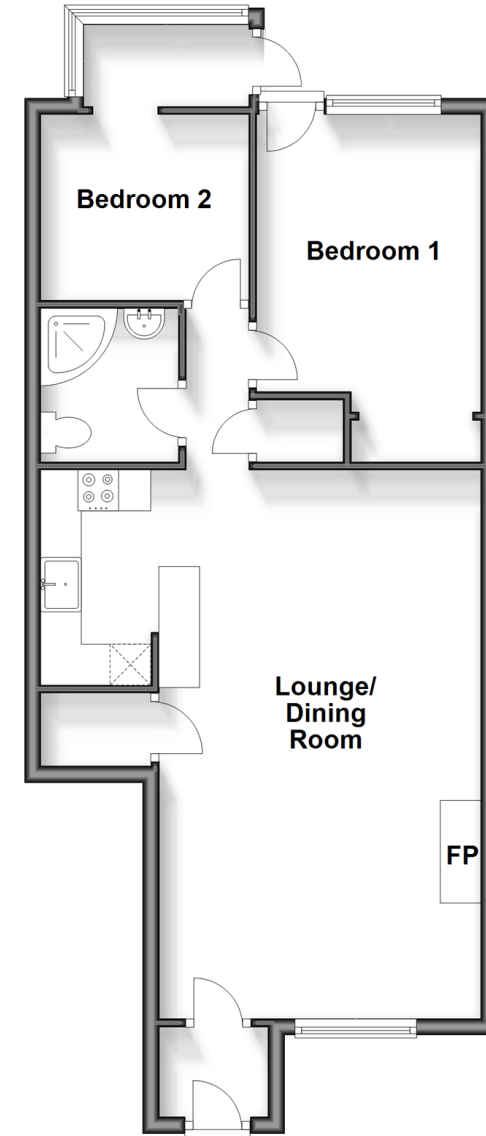
OUTSIDE

Allocated Parking

Rear Garden

Ground Floor

Approx. 59.1 sq. metres (636.1 sq. feet)



Call Freshwater - 01983 756222 ■ pittis.co.uk

- Legal advice should be taken to verify fixtures/fittings, planning, alterations and/or lease details
- Appliances & services are untested, dimensions are approximate and floor plans are not to scale
- Through a Homewise Home For Life Plan people aged 60+ can secure this property for up to 59% less, by purchasing a Lifetime Lease.



60218458/20241028/MMF/CG