



**OVER 60?**

Secure this property  
for up to **59% less!**

**Price**

**£535,000**

**Freehold**

3x  2x  2x 

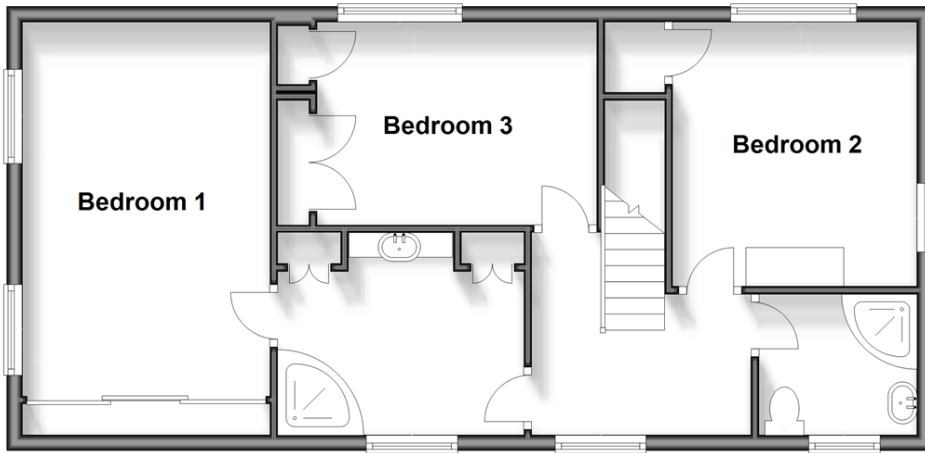
**Colwell Lane,  
Freshwater, Isle of  
Wight, PO40**

**Pittis**   
Helping you move forwards



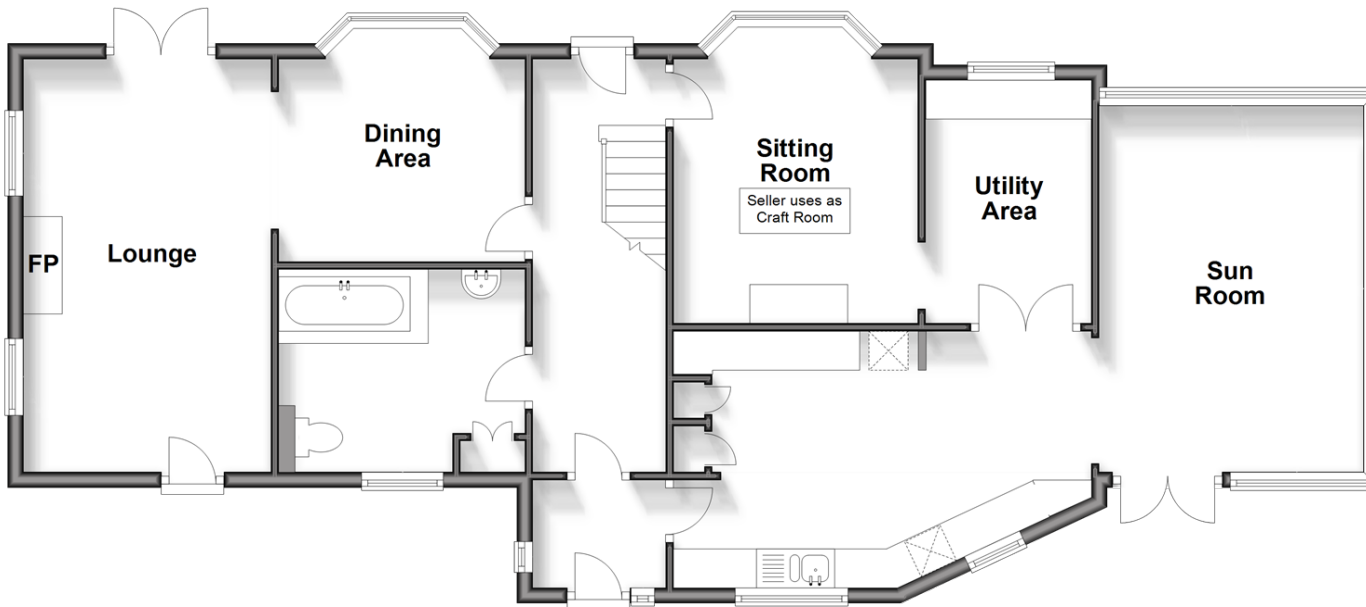
### First Floor

Approx. 60.7 sq. metres (653.7 sq. feet)



### Ground Floor

Approx. 98.0 sq. metres (1054.9 sq. feet)



## Accommodation

### GROUND FLOOR

Entrance Hall

Dining Area: 11'7 x 10'5 into bay (3.53m x 3.18m)

Lounge Area: 17'5 x 10'0 (5.31m x 3.05m)

Study/Bedroom 4: 11'1 x 10'6 (3.38m x 3.20m)

Utility Room /Office: 10'8 x 6'3 (3.25m x 1.91m)

Kitchen: 16'4 x 13'3 maximum (4.98m x 4.04m)

Conservatory: 16'7 x 11'4 (5.06m x 3.46m)

### FIRST FLOOR

Landing

Bedroom 1: 15'3 x 10'4 (4.65m x 3.15m)

En suite Shower Room

Bedroom 2: 11'10 x 10'5 (3.61m x 3.18m)

Bedroom 3: 11'3 x 8'5 (3.43m x 2.57m)

Bathroom

### OUTSIDE

Double Garage

Front Garden

Rear Garden

Pergola

Garden Shed



## Main features

- Detached house with flexible layout and lovely conservatory
- Double garage with mechanic pit to one side and driveway parking
- Spacious layout with en suite to bedroom 1
- Wrap around gardens, with a pergola, shed and outside seating area
- Located within easy reach for a stroll to Colwell Bay Beach



### Nearest Schools

St. Saviour's Catholic Primary School  
Freshwater and Yarmouth C of E Primary School  
Christ the King College, Newport  
Carisbrooke College, Newport  
Isle of Wight College, Newport



### Transport Information

There is a local bus service to all parts of the Island including the ferry terminus at Yarmouth. Plus, local weekday service of the FYT bus.



### Address

Colwell Lane, Freshwater, Isle of Wight, PO40



### Directions

For directions to this property please contact us.



