



Price

£550,000

Freehold

3x  2x  2x 

**Colwell Lane,
Freshwater, Isle of
Wight, PO40**

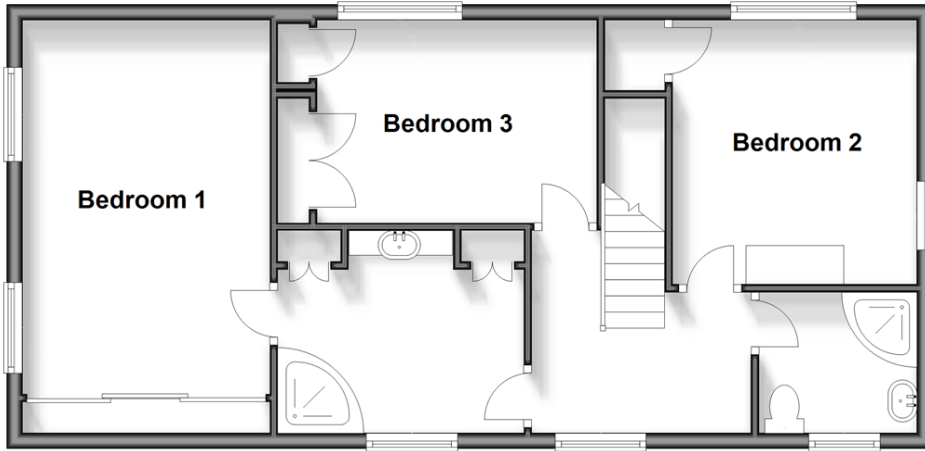
OVER 60?

Secure this property
for up to **59% less!**

Pittis 
Helping you move forwards

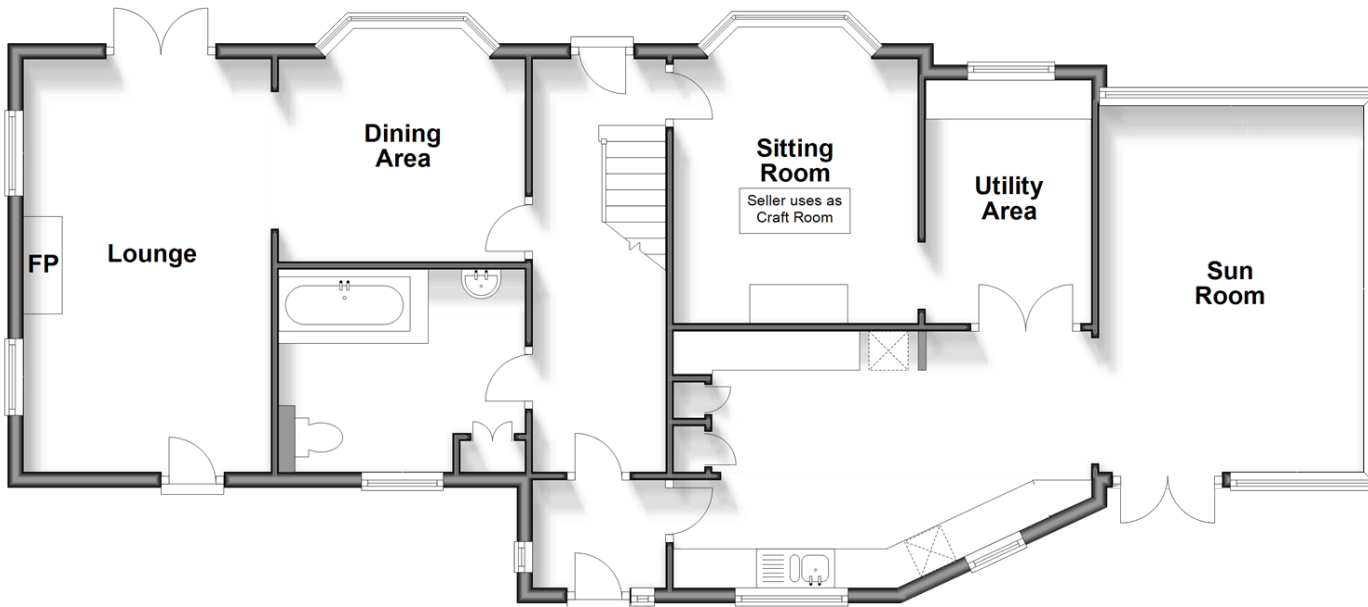
First Floor

Approx. 60.7 sq. metres (653.7 sq. feet)



Ground Floor

Approx. 98.0 sq. metres (1054.9 sq. feet)



Accommodation

GROUND FLOOR

Entrance Hall

Dining Area: 11'7 x 10'5 into bay (3.53m x 3.18m)

Lounge Area: 17'5 x 10'0 (5.31m x 3.05m)

Study/Bedroom 4: 11'1 x 10'6 (3.38m x 3.20m)

Utility Room /Office: 10'8 x 6'3 (3.25m x 1.91m)

Kitchen: 16'4 x 13'3 maximum (4.98m x 4.04m)

Conservatory: 16'7 x 11'4 (5.06m x 3.46m)

FIRST FLOOR

Landing

Bedroom 1: 15'3 x 10'4 (4.65m x 3.15m)

En suite Shower Room

Bedroom 2: 11'10 x 10'5 (3.61m x 3.18m)

Bedroom 3: 11'3 x 8'5 (3.43m x 2.57m)

Bathroom

OUTSIDE

Double Garage

Front Garden

Rear Garden

Pergola

Garden Shed



Main features

- Detached house with flexible layout and lovely conservatory
- Double garage with mechanic pit to one side and driveway parking
- Spacious layout with en suite to bedroom 1
- Wrap around gardens, with a pergola, shed and outside seating area
- Located within easy reach for a stroll to Colwell Bay Beach



Nearest Schools

St. Saviour's Catholic Primary School
Freshwater and Yarmouth C of E Primary School
Christ the King College, Newport
Carisbrooke College, Newport
Isle of Wight College, Newport



Transport Information

There is a local bus service to all parts of the Island including the ferry terminus at Yarmouth. Plus, local weekday service of the FYT bus.



Address

Colwell Lane, Freshwater, Isle of Wight, PO40



Directions

For directions to this property please contact us.

