



Price
£117,500

Freehold

2x  1x  1x 

**Brambles Chine, Monks
Lane, Freshwater, PO40**

Pittis 
Helping you move forwards



Main features

- Semi detached holiday bungalow with lovely outlook
- 42 week occupancy
- Ideal lock up and leave with buy to let potential
- Open plan living area with two double bedrooms
- Attractive site with coastline views and local walks nearby



Accommodation

GROUND FLOOR

Lounge/Dining Area: 14'7 x 10'7 (4.45m x 3.23m)

Kitchen Area: 10'9 x 5'4 (3.28m x 1.63m)

Bedroom 1: 10'11 x 7'9 (3.33m x 2.36m)

Bedroom 2: 8'9 x 7'4 (2.67m x 2.24m)

Bathroom

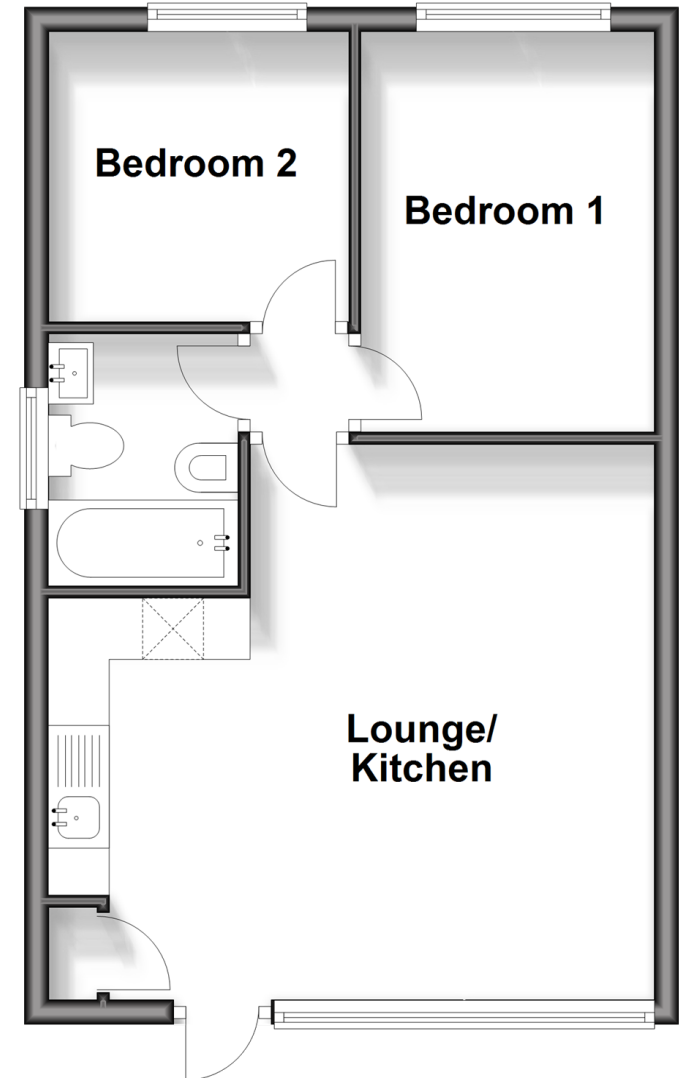
OUTSIDE

- Private Patio Area
- Communal Gardens
- Parking Area



Ground Floor

Approx. 39.4 sq. metres (423.8 sq. feet)



Call Freshwater - 01983 756222 ■ pittis.co.uk

- If buying to let, the energy rating will need to be improved to at least 'E' rating before you can let the property
- Legal advice should be taken to verify fixtures/fittings, planning, alterations and/or lease details
- Appliances & services are untested, dimensions are approximate and floor plans are not to scale



60216206/20241004/CG/EP