

OVER 60?

Secure this property
for up to **59% less!**



Price

£400,000

Freehold

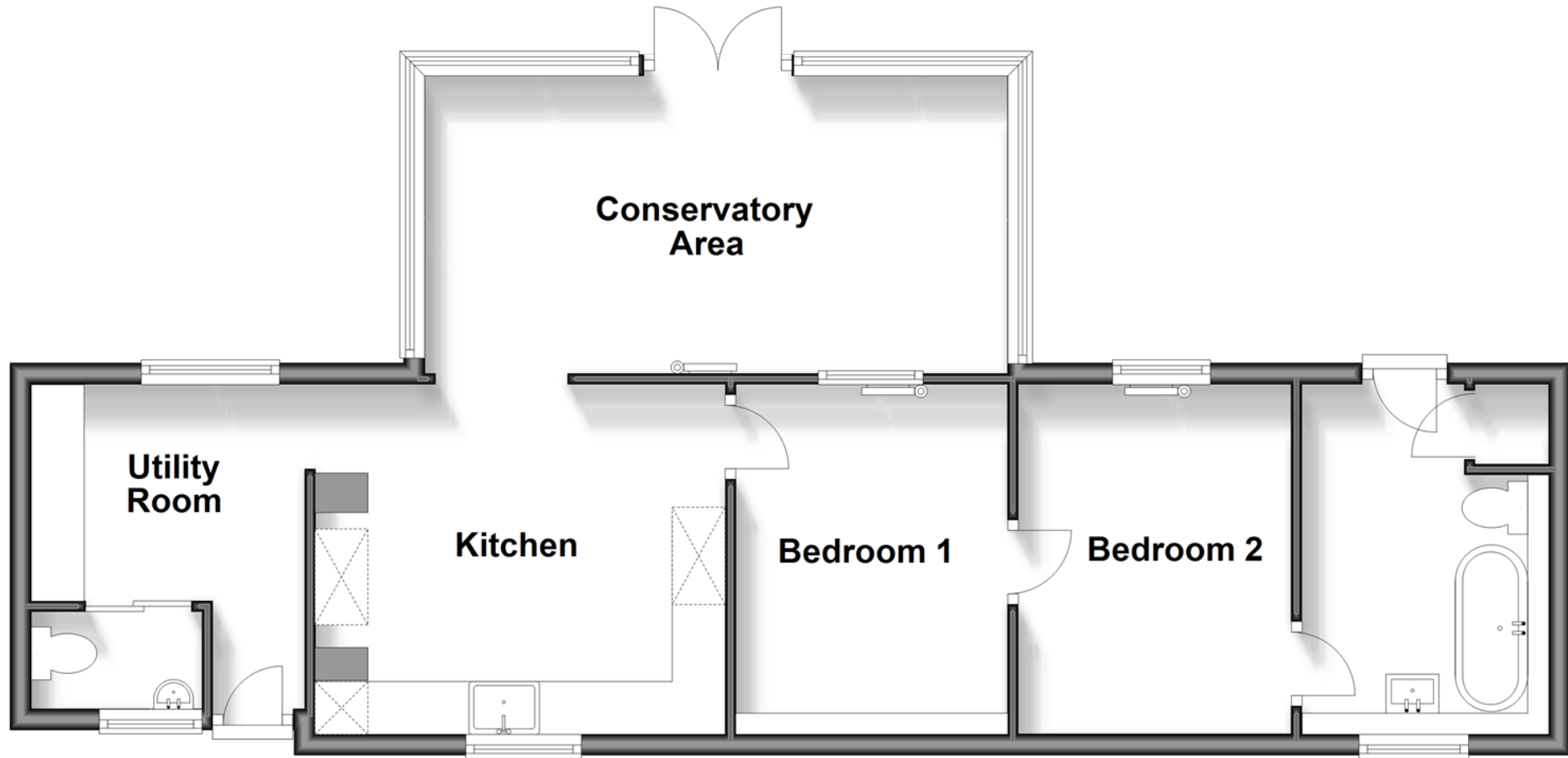
2x  1x  1x 

Norton Green, Freshwater, Isle of Wight,
PO40

Pittis 
Helping you move forwards

Ground Floor

Approx. 62.9 sq. metres (676.6 sq. feet)



Accommodation

GROUND FLOOR

Entrance Hall

Utility Room

Cloakroom

Kitchen: 11'2 x 9'6 (3.41m x 2.90m)

Conservatory / Living Area: 17'7 x 9'6
(5.36m x 2.90m)

Bedroom 1: 10'4 x 8'5 (3.15m x 2.57m)

Bedroom 2: 10'0 x 8'5 (3.05m x 2.57m)

OUTSIDE

Shepherds Hut

Greenhouse

Off Road Parking

Shed

Gardens

Work-shed



Main features

- Stunning country cottage with character features
- Flexible living accommodation with a luxury shepherds hut
- Ample off road parking
- Within easy reach of Yarmouth Harbour
- Picturesque plot with established vegetable plot and lawn.
- With additional work-shed, shed and Summerhouse



Nearest Schools

St. Saviour's Catholic Primary School
Freshwater and Yarmouth C of E Primary School
Christ the King College, Newport
Carisbrooke College, Newport
Isle of Wight College, Newport



Transport Information

There is a local bus service to all parts of the Island including the ferry terminus at Yarmouth. Plus, local weekday service of the FYT bus.



Address

Norton Green, Freshwater, Isle of Wight, PO40



Directions

For directions to this property please contact us.



Call Freshwater Branch 01983 756222 ■ pittis.co.uk



■ Legal advice should be taken to verify fixtures/fittings, planning, alterations and/or lease details ■ Appliances & services are untested, dimensions are approximate and floor plans are not to scale
■ Through a Homewise Home For Life Plan people aged 60+ can secure this property for up to 59% less, by purchasing a Lifetime Lease.

EPC RATING	CURRENT:	POTENTIAL:
	D(58)	A(95)

60217847/20240501/SC1/EP