



**Price**  
**£405,000**

**Freehold**

2x  1x  1x 

**Queens Road,  
Freshwater, Isle of  
Wight, PO40**

**OVER 60?**

Secure this property  
for up to **59% less!**

**Pittis**   
Helping you move forwards





## Main features

- Detached bungalow set in a pretty quiet location
- Accessible to the Village
- Generous gardens with a croft caravan
- Good sized lounge with doors to the garden
- Recently upgraded kitchen
- Potential to change layout to add 3rd bedroom subject to conditions

## Accommodation

### GROUND FLOOR

Entrance Lobby

Lounge: 20'1 x 14'9 (6.13m x 4.50m)

Bedroom 1: 12'2 x 11'9 (3.71m x 3.58m)

Bedroom 2: 12'0 x 10'4 (3.66m x 3.15m)

Kitchen: 18'2 x 12'3 (5.54m x 3.74m)

Bathroom

Storage Area

Utility Room

### OUTSIDE

Driveway Parking

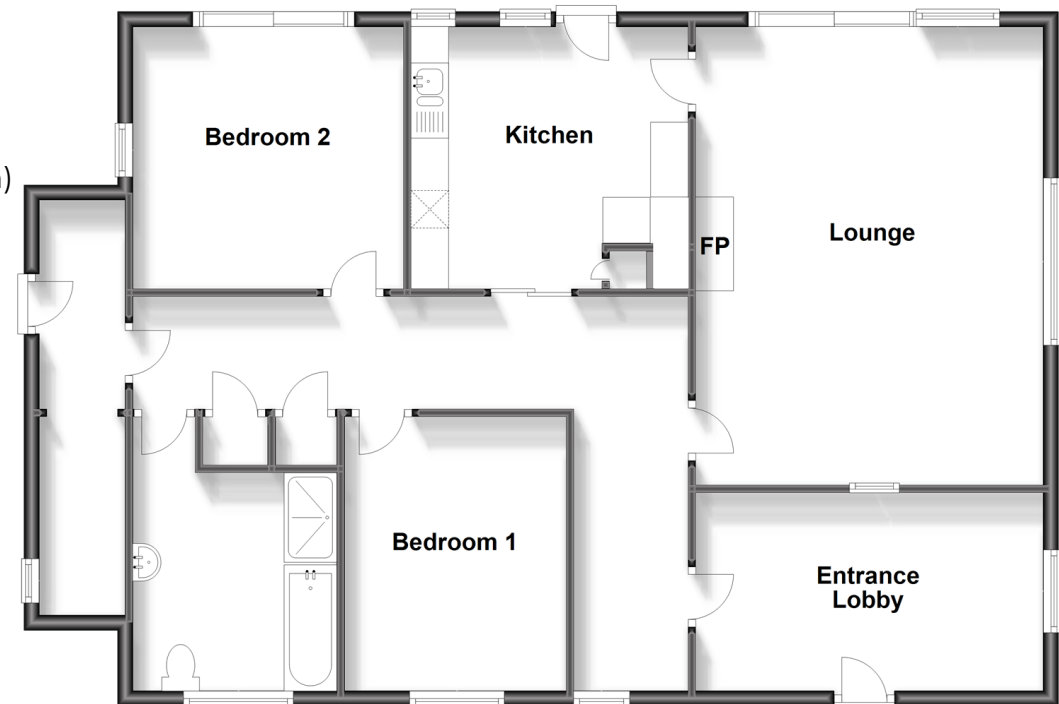
Garden

Caravan

Shed

### Ground Floor

Approx. 113.8 sq. metres (1224.5 sq. feet)



**Call Freshwater - 01983 756222 ■ pittis.co.uk**

■ Legal advice should be taken to verify fixtures/fittings, planning, alterations and/or lease details  
 ■ Through a Homewise Home For Life Plan people aged 60+ can secure this property for up to 59% less, by purchasing a Lifetime Lease.

■ Appliances & services are untested, dimensions are approximate and floor plans are not to scale



60218250/20240206/CG/EP