



Price
£340,000

Freehold

4x  2x  2x 

**Spinnaker Close, Cowes,
Isle of Wight, PO31**



OVER 60?

You could get up to
59% off the price!*



Video Tour available

Pittis 
Helping you move forwards



Main features

- Secluded and privately situated family home
- Garage and parking for several vehicles
- En-suite to master bedroom
- South facing garden
- Four well proportioned bedrooms

Accommodation

GROUND FLOOR

Entrance Hall

Lounge: 16'4 x 10'9 (4.98m x 3.28m)

Dining Room: 9'11 x 8'11 (3.02m x 2.72m)

Kitchen: 10'8 x 10'3 (3.25m x 3.13m)

Utility Room: 5'11 x 5'4 (1.80m x 1.63m)

Cloakroom: 5'4 x 3'8 (1.63m x 1.12m)

FIRST FLOOR

Landing

Bedroom 1: 15'7 x 11'1 (4.75m x 3.38m)

En-suite Shower Room

Bedroom 2: 11'11 x 7'10 (3.63m x 2.39m)

Bedroom 3: 11'1 x 8'1 (3.38m x 2.47m)

Bedroom 4: 11'2 x 7'7 (3.41m x 2.31m)

Bathroom: 7'6 x 5'8 (2.29m x 1.73m)

OUTSIDE

Garage

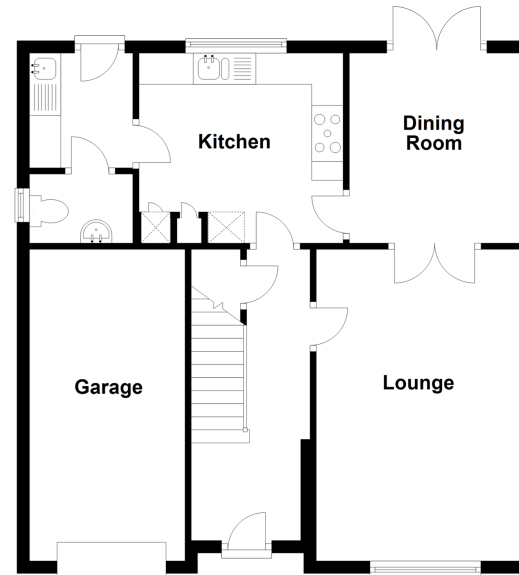
Off Road Parking

Front Garden

South Facing Rear Garden

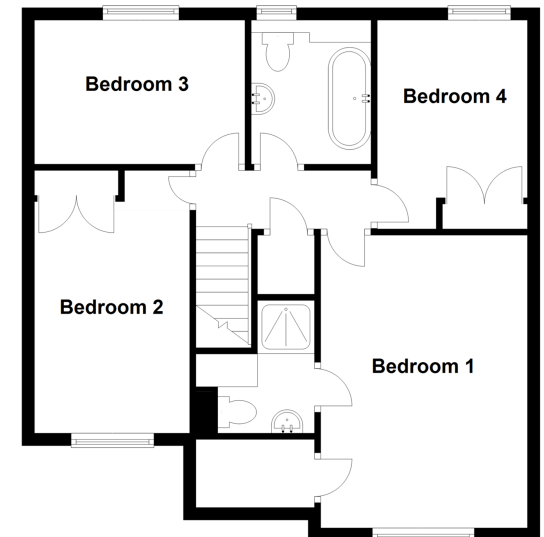
Ground Floor

Approx. 63.5 sq. metres (683.7 sq. feet)



First Floor

Approx. 59.6 sq. metres (641.8 sq. feet)



Call Cowes - 01983 292345 ■ pittis.co.uk

- Legal advice should be taken to verify fixtures/fittings, planning, alterations and/or lease details
- Our Homewise partnership offer a 'Home for Life' plan to buyers over 60, granting a lifetime lease for your protection and reducing the purchase price by up to 59%

- Appliances & services are untested, dimensions are approximate and floor plans are not to scale