



Price
£225,000

Freehold

2x  1x  2x 

**Moor Green Road,
Cowes, Isle of Wight,
PO31**

OVER 60?

You could get up to
59% off the price!*



Video Tour available

Pittis 
Helping you move forwards



Main features

- Beautifully presented 2 bedroom semi-detached house
- Fully renovated by the current owners to a high standard
- Rear access to the sunny landscaped garden
- Walking distance to local schools and Red Jet
- Ideal first time buy or holiday home

Accommodation

GROUND FLOOR

Entrance Hall

Lounge: 14'5 x 10'5 (4.40m x 3.18m)

Kitchen: 13'8 x 11'11 (4.17m x 3.63m)

Dining Room: 16'7 x 9'1 (5.06m x 2.77m)

FIRST FLOOR

Landing

Bathroom: 9'4 x 6'10 (2.85m x 2.08m)

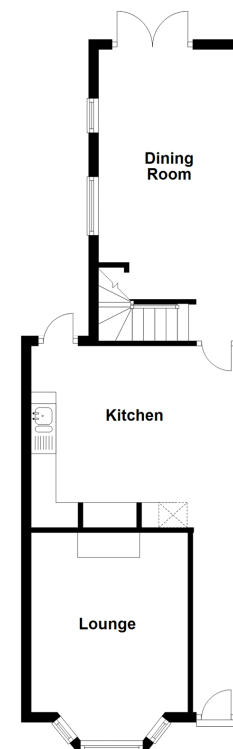
Bedroom 2: 11'11 x 10'8 (3.63m x 3.25m)

Bedroom 1: 14'4 x 13'8 (4.37m x 4.17m)

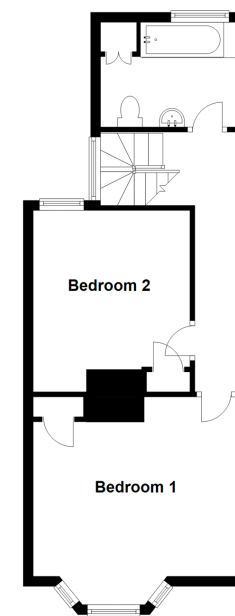
OUTSIDE

Rear Garden

Ground Floor
Approx. 48.2 sq. metres (518.9 sq. feet)



First Floor
Approx. 41.6 sq. metres (447.3 sq. feet)



Call Cowes - 01983 292345 ■ pittis.co.uk

■ Legal advice should be taken to verify fixtures/fittings, planning, alterations and/or lease details
 ■ Our Homewise partnership offer a 'Home for Life' plan to buyers over 60, granting a lifetime lease for your protection and reducing the purchase price by up to 59%

■ Appliances & services are untested, dimensions are approximate and floor plans are not to scale



60118577/20201002/HW/AG