



OVER 60?

You could get up to
59% off the price!*



Video Tour available

Price

£270,000

Freehold

4x  2x  2x 

**Mill Hill Road, Cowes,
Isle of Wight, PO31**

Pittis 
Helping you move forwards



Main features

- A charming 4 bedroom family home packed full of character
- Potential for off road parking (Subject to usual consents)
- Beautiful enclosed garden with brick-built outbuilding ideal for home office or gym.
- Stunning views of "The Solent"
- Bathrooms on first and second floors
- Offered chain free

Accommodation

GROUND FLOOR

Entrance Hall

Kitchen: 14'8 x 9'0 (4.47m x 2.75m)

Dining Room: 14'5 x 9'6 (4.40m x 2.90m)

Lounge: 12'6 x 11'11 (3.81m x 3.63m)

FIRST FLOOR

Landing

Bedroom 2: 15'1 x 11'11 (4.60m x 3.63m)

Bedroom 3: 14'1 x 9'7 (4.30m x 2.92m)

Shower Room: 8'11 x 3'5 (2.72m x 1.04m)

SECOND FLOOR

Landing

Separate Toilet

Bedroom 4: 14'1 x 6'7 (4.30m x 2.01m)

Bathroom: 6'11 x 5'3 (2.11m x 1.60m)

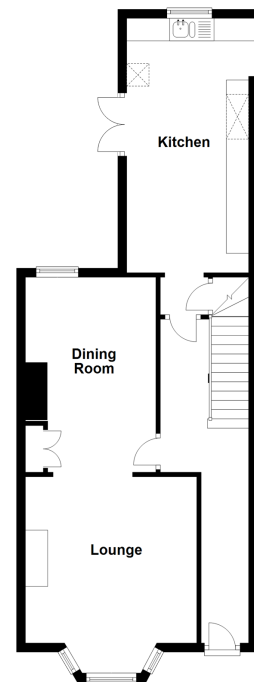
Bedroom 1: 16'5 x 11'11 (5.01m x 3.63m)

OUTSIDE

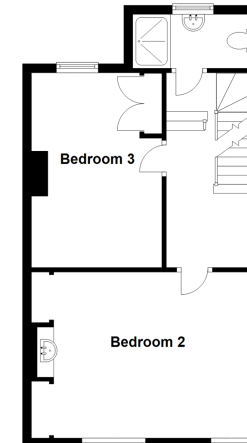
Front Garden

Rear Garden

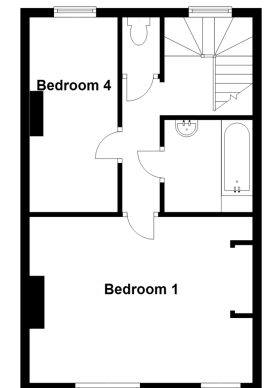
Ground Floor
Approx. 57.8 sq. metres (622.6 sq. feet)



First Floor
Approx. 44.2 sq. metres (476.1 sq. feet)



Second Floor
Approx. 40.7 sq. metres (437.8 sq. feet)



Call Cowes - 01983 292345 ■ pittis.co.uk

- Legal advice should be taken to verify fixtures/fittings, planning, alterations and/or lease details
- Our Homewise partnership offer a 'Home for Life' plan to buyers over 60, granting a lifetime lease for your protection and reducing the purchase price by up to 59%

- Appliances & services are untested, dimensions are approximate and floor plans are not to scale



60118399/20200724/HW/AG