



**Price**

**£120,000**

**Leasehold**

2x  1x  1x 

**Greenlands Road, East  
Cowes, Isle of Wight,  
PO32**



**Pittis**   
Helping you move forwards



## Main features

- Spacious ground floor 2-bedroom maisonette
- Private rear garden
- Potential for off road parking (subject to relevant planning and consents)
- Cul-de-sac location
- Walking distance to local parks and schools

## Accommodation

### GROUND FLOOR

#### Entrance Hall

**Lounge:** 13'4 x 12'7 (4.07m x 3.84m)

**Kitchen:** 10'2 x 8'3 (3.10m x 2.52m)

**Bedroom 1:** 11'3 x 10'8 (3.43m x 3.25m)

**Bedroom 2:** 10'2 x 9'1 (3.10m x 2.77m)

**Bathroom:** 7'5 x 6'4 (2.26m x 1.93m)

### OUTSIDE

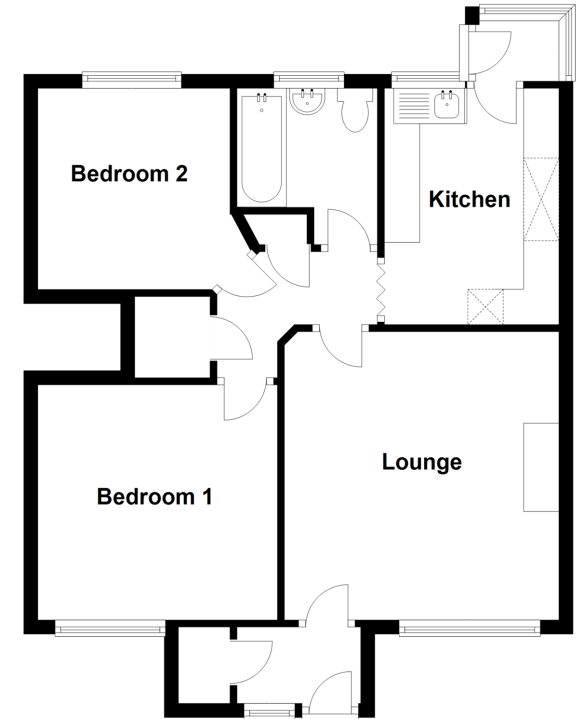
#### Front Garden

#### Rear Garden

Call Cowes - 01983 292345 ■ [pittis.co.uk](http://pittis.co.uk)

- Legal advice should be taken to verify fixtures/fittings, planning, alterations and/or lease details
- Appliances & services are untested, dimensions are approximate and floor plans are not to scale
- Our Homewise partnership offer a 'Home for Life' plan to buyers over 60, granting a lifetime lease for your protection and reducing the purchase price by up to 59%

**Ground Floor**  
Approx. 57.7 sq. metres (621.4 sq. feet)



60118192/20200921/HW/AG