



**Price**  
**£270,000**

**Freehold**

3x  1x  2x 

**Newport Road, Cowes,  
Isle of Wight, PO31**

**OVER 60?**

Secure this property  
for up to **59% less!**

**Pittis**   
Helping you move forwards





## Main features

- Spacious period semi-detached home with original features
- Separate lounge and dining room
- Good sized fitted kitchen
- Great location close to Cowes town centre and mainland links
- Low maintenance garden to the rear

## Accommodation

### GROUND FLOOR

Entrance Hall

Lounge: 14'4 x 11'6 (4.37m x 3.51m)

Dining Room: 11'4 x 9'4 (3.46m x 2.85m)

Kitchen: 14'8 x 10'7 (4.47m x 3.23m)

### FIRST FLOOR

Landing

Bedroom 1: 14'9 x 11'5 (4.50m x 3.48m)

Bedroom 2: 10'2 x 9'4 (3.10m x 2.85m)

Bedroom 3: 11'6 x 5'4 (3.51m x 1.63m)

Shower Room

### OUTSIDE

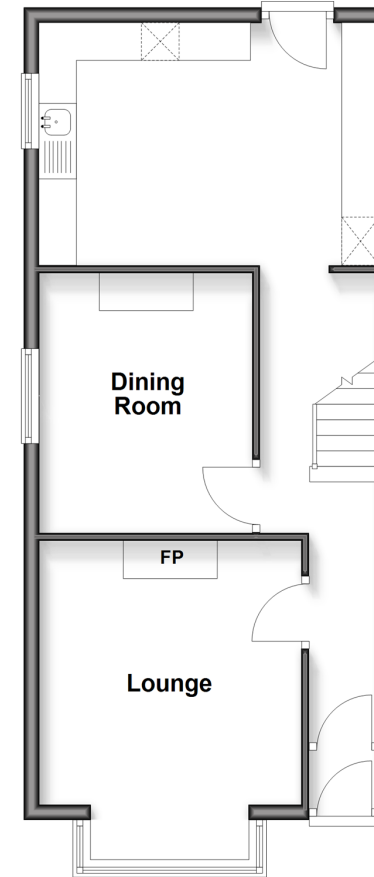
Front Garden

Rear Garden

Shed

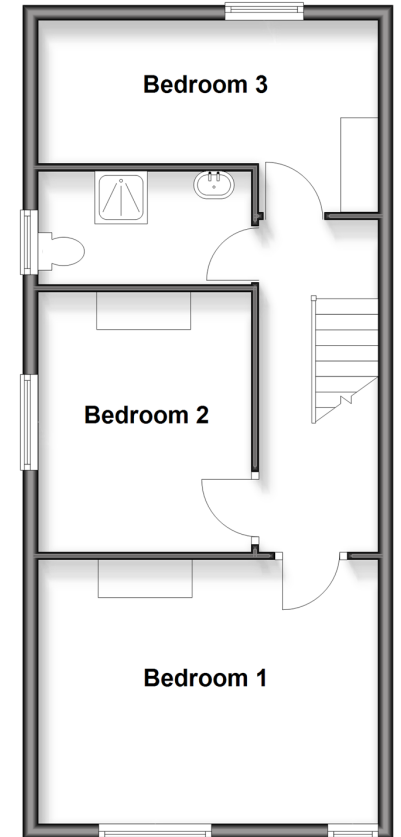
### Ground Floor

Approx. 47.8 sq. metres (514.1 sq. feet)



### First Floor

Approx. 48.3 sq. metres (519.8 sq. feet)



**Call Cowes - 01983 292345 ■ [pittis.co.uk](http://pittis.co.uk)**

- Legal advice should be taken to verify fixtures/fittings, planning, alterations and/or lease details
- Appliances & services are untested, dimensions are approximate and floor plans are not to scale
- Through a Homewise Home For Life Plan people aged 60+ can secure this property for up to 59% less, by purchasing a Lifetime Lease.



60119292/20250313/MB/NH