



OVER 60?
Secure this property
for up to **59% less!**

Price
£300,000

Freehold

3x  2x  2x 

**Bellevue Road, Cowes,
Isle of Wight, PO31**

Pittis 
Helping you move forwards



Main features

- Period terraced home with sea views
- Spacious home with lounge, family room and kitchen/ diner
- Lots of period charm including an open fireplace
- Lovely enclosed garden to the rear with gated access
- Popular location within easy reach of town and links to the mainland

Accommodation

GROUND FLOOR

Entrance Hallway

Lounge : 13'10 x 11'11 (4.22m x 3.63m)

Sitting Room : 14'1 x 10'6 (4.30m x 3.20m)

Dining Area/Kitchen: 22'0 x 9'5 (6.71m x 2.87m)

FIRST FLOOR

Landing

Bedroom 1 : 14'1 x 13'8 (4.30m x 4.17m)

Bedroom 2: 11'11 x 10'7 (3.63m x 3.23m)

Bedroom 3: 18'11 x 9'5 (5.77m x 2.87m)

En Suite

Bathroom

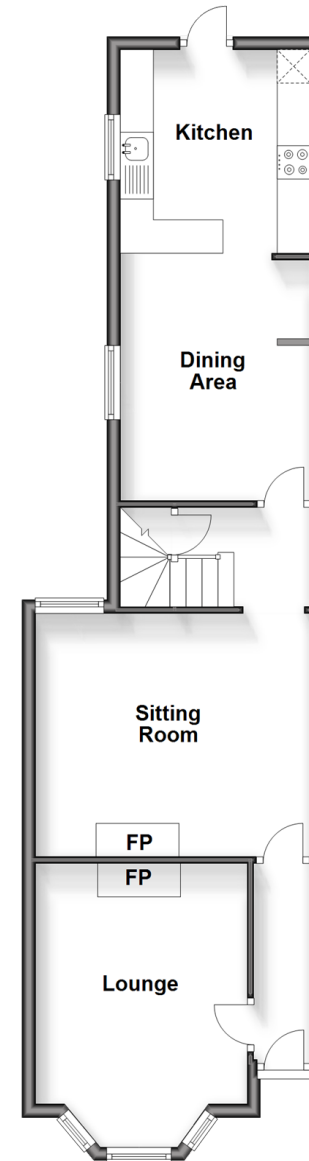
OUTSIDE

Front Garden

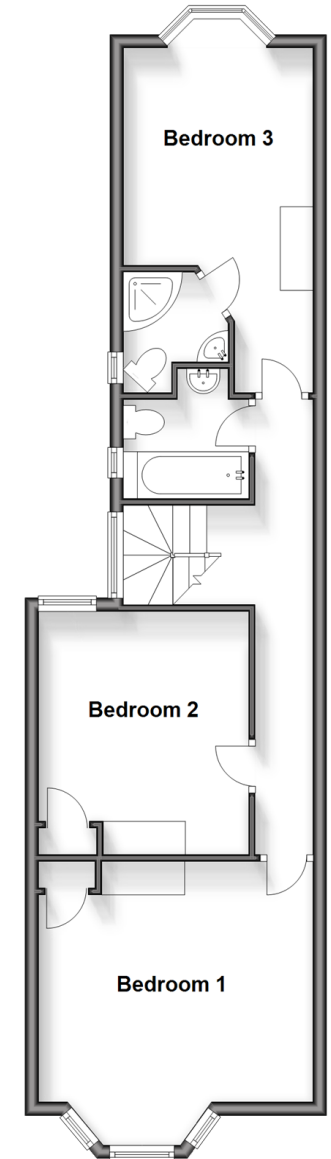
Rear Garden

Shed

Ground Floor
Approx. 55.1 sq. metres (593.3 sq. feet)



First Floor
Approx. 55.9 sq. metres (601.7 sq. feet)



Call Cowes - 01983 292345 ■ pittis.co.uk

- Legal advice should be taken to verify fixtures/fittings, planning, alterations and/or lease details
- Appliances & services are untested, dimensions are approximate and floor plans are not to scale
- Through a Homewise Home For Life Plan people aged 60+ can secure this property for up to 59% less, by purchasing a Lifetime Lease.



60112613/20240716/JH/NH