



Price
£125,000

Leasehold

3x  2x  1x 

**Gurnard Pines,
Cockleton Lane, Cowes,
Isle of Wight, PO31**

OVER 60?

Secure this property
for up to **59% less!**

Pittis 
Helping you move forwards



Main features

- Semi-detached bungalow
- 52 week residency
- Generous sized accommodation with open-plan living/kitchen/dining area
- On-site facilities including gym and shop
- Close to the historic sailing town of Cowes

Accommodation

GROUND FLOOR

Kitchen Area: 10'0 x 7'3 (3.05m x 2.21m)

Lounge Area: 13'11 x 13'2 (4.24m x 4.02m)

Dining Area: 13'11 x 6'8 (4.24m x 2.03m)

Hallway

Bathroom

Bedroom 1: 14'0 x 11'4 (4.27m x 3.46m)

En-suite Bathroom

Bedroom 2: 13'9 x 11'2 (4.19m x 3.41m)

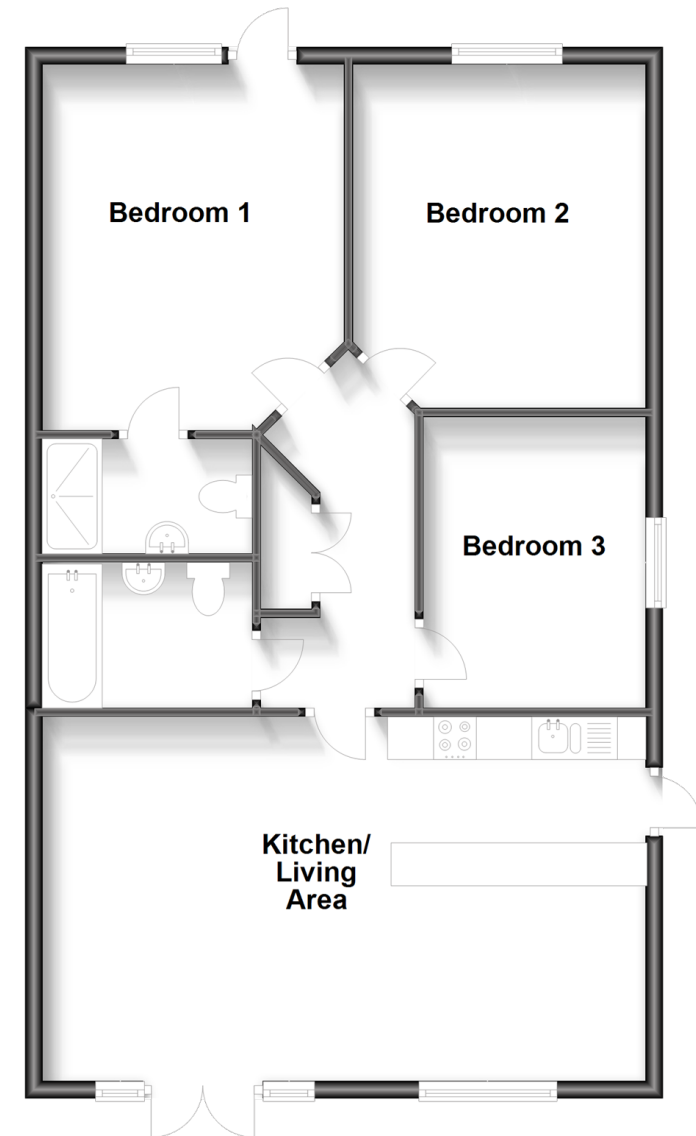
Bedroom 3: 12'0 x 8'4 (3.66m x 2.54m)

OUTSIDE

Front Decking

Ground Floor

Approx. 83.6 sq. metres (899.7 sq. feet)



Call Cowes - 01983 292345 ■ pittis.co.uk

- Legal advice should be taken to verify fixtures/fittings, planning, alterations and/or lease details
- Appliances & services are untested, dimensions are approximate and floor plans are not to scale
- Through a Homewise Home For Life Plan people aged 60+ can secure this property for up to 59% less, by purchasing a Lifetime Lease.



60119190/20240510/NH/NH