



OVER 60?

Secure this property
for up to **59% less!**

Price

£190,000

Freehold

4x  2x  1x 

**Kings Road, East Cowes,
Isle of Wight, PO32**

Pittis 
Helping you move forwards



Main features

- Good size mid terraced house
- Flexible and adaptable accommodation throughout
- Offered with no onward
- Paved and enclosed courtyard garden
- Convenient location for access to the red funnel ferry and mainland connections

Accommodation

LOWER GROUND FLOOR

Kitchen: 13'6 x 10'8 (4.12m x 3.25m)

Shower Room

Diner: 13'7 x 11'8 (4.14m x 3.56m)

Conservatory: 14'8 x 6'9 (4.47m x 2.06m)

FIRST FLOOR

Lounge: 11'7 x 10'5 (3.53m x 3.18m)

Bedroom 3: 12'6 x 8'2 (3.81m x 2.49m)

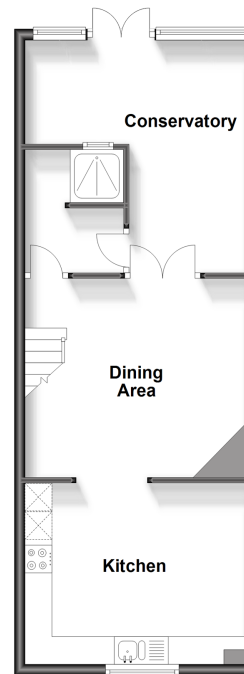
Bathroom

SECOND FLOOR

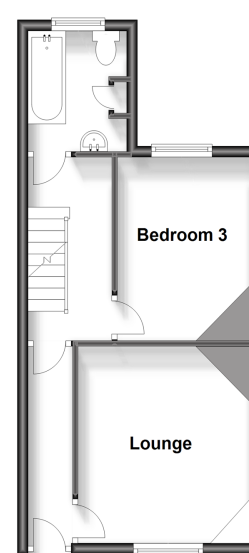
Bedroom 2: 11'11 x 10'9 (3.63m x 3.28m)

Bedroom 1: 14'0 x 11'7 (4.27m x 3.53m)

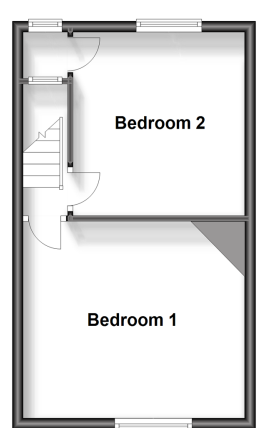
Lower Ground Floor
Approx. 46.3 sq. metres (498.7 sq. feet)



First Floor
Approx. 32.8 sq. metres (353.3 sq. feet)



Second Floor
Approx. 28.7 sq. metres (308.6 sq. feet)



Call Cowes - 01983 292345 ■ pittis.co.uk

- Legal advice should be taken to verify fixtures/fittings, planning, alterations and/or lease details
- Appliances & services are untested, dimensions are approximate and floor plans are not to scale
- Through a Homewise Home For Life Plan people aged 60+ can secure this property for up to 59% less, by purchasing a Lifetime Lease.



60119138/20231209/YB/PG