



Price
£250,000

Freehold

3x  1x  2x 

**Yarborough Road, East
Coves, Isle of Wight,
PO32**

OVER 60?

You could get up to
59% off the price!*

Pittis 
Helping you move forwards



Main features

- Beautifully presented family home, recently professionally decorated throughout
- Bright, open plan kitchen/breakfast area looking out over the large landscaped garden
- Plenty of living space & large family bathroom less than 1 year old

Accommodation

GROUND FLOOR

Entrance Hall

Lounge: 12'0 x 11'11 (3.66m x 3.63m)

Dining Area: 11'11 x 11'6 (3.63m x 3.51m)

Kitchen/Breakfast Area: 24'1 x 10'5 (7.35m x 3.18m)

FIRST FLOOR

Landing

Bedroom 1: 12'0 x 11'11 (3.66m x 3.63m)

Bathroom

SECOND FLOOR

Landing

Bedroom 2: 12'5 x 12'1 (3.79m x 3.69m)

Bedroom 3: 12'2 x 12'0 (3.71m x 3.66m)

OUTSIDE

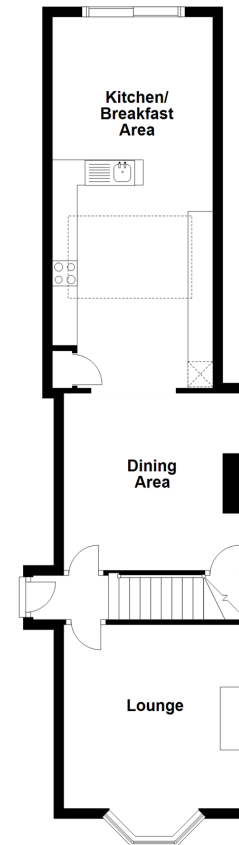
Front Garden

Large Rear Garden

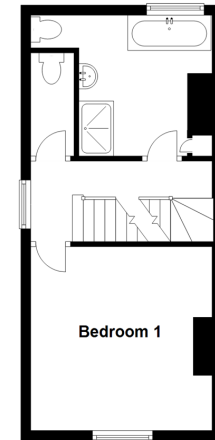
Call Cowes - 01983 292345 ■ pittis.co.uk

- Legal advice should be taken to verify fixtures/fittings, planning, alterations and/or lease details
- Appliances & services are untested, dimensions are approximate and floor plans are not to scale
- Our Homewise partnership offer a 'Home for Life' plan to buyers over 60, granting a lifetime lease for your protection and reducing the purchase price by up to 59%

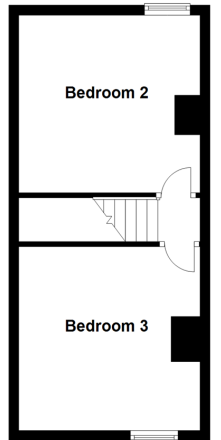
Ground Floor
Approx. 54.9 sq. metres (591.5 sq. feet)



First Floor
Approx. 30.1 sq. metres (324.0 sq. feet)



Second Floor
Approx. 30.1 sq. metres (324.0 sq. feet)



60118778/20210920/BB/NR