



Guide Price
£1,100,000

Freehold

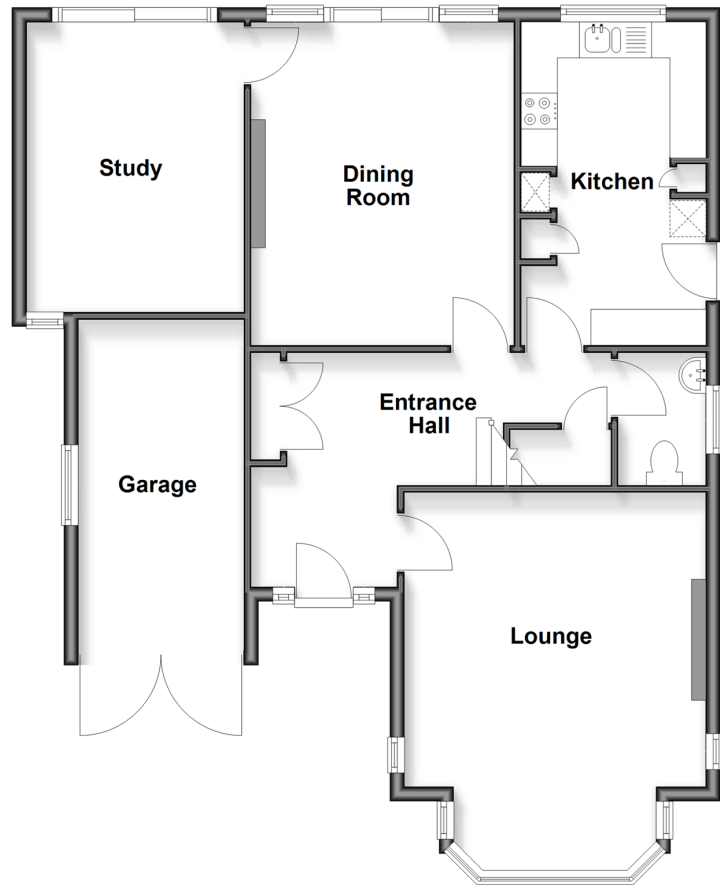
4x  1x  2x 

**Tudor Close, Woodford
Green, Essex, IG8**

 **DOUGLAS
ALLEN**
Helping you move forwards

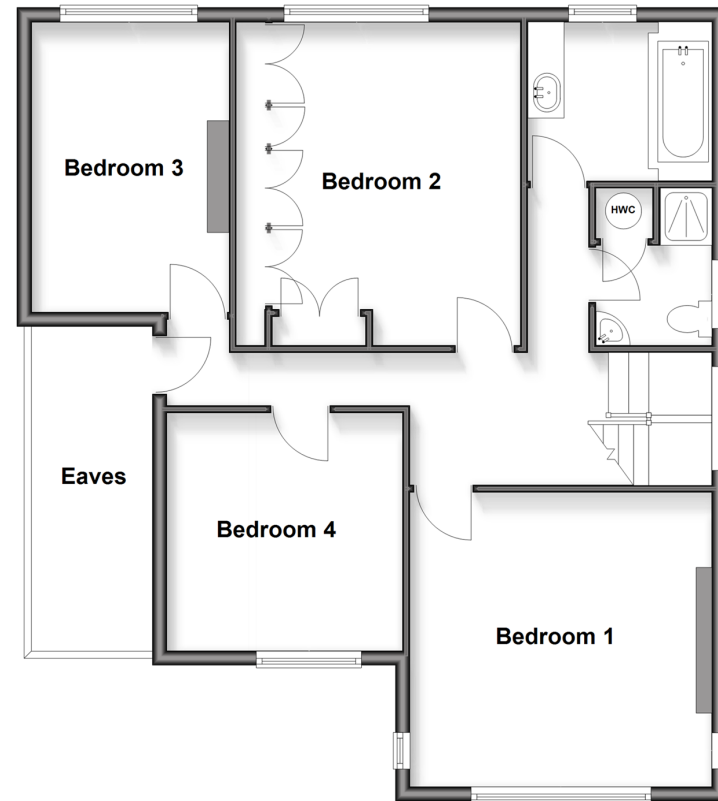
Ground Floor

Approx. 87.3 sq. metres (940.0 sq. feet)



First Floor

Approx. 81.6 sq. metres (878.3 sq. feet)



Accommodation

GROUND FLOOR

Entrance Hall

Lounge: 16'5 x 13'8 (5.01m x 4.17m)

Dining Room: 15'3 x 11'11 (4.65m x 3.63m)

Study: 13'3 x 9'10 (4.04m x 3.00m)

Kitchen: 14'8 x 8'4 (4.47m x 2.54m)

FIRST FLOOR

Landing

Bedroom 1: 13'9 x 13'6 (4.19m x 4.12m)

Bedroom 2: 14'8 x 9'9 (4.47m x 2.97m)

Bedroom 3 : 11'1 x 10'3 (3.38m x 3.13m)

Bedroom 4: 13'4 x 9'10 (4.07m x 3.00m)

Family Bathroom

EXTERIOR

Rear Garden

Integral Garage

Side storage Shed



Main features

- "Monkhams" Estate detached House
- Spacious rooms
- Lounge, dining room and study
- In need of modernisation
- No onward chain



Nearest Schools

Primary Schools: Wells Primary 0.2 miles, St Antony's Catholic Primary 0.3 miles, Woodford Green Primary 0.3 miles

Secondary Schools: Trinity Catholic High School 0.5 miles,



Transport Information

Train Stations: Chingford 2.5 miles, Highams Park 2.6 miles, Wood Street 3.1 miles

Underground Woodford 0.4 miles, Roding Valley 0.9 miles, Buckhurst Hill 2.0 miles



Address Prince Regent 7.0 miles, Custom House 7.0 miles,

Tudor Close, Woodford Green, Essex, IG8



Directions

For directions to this property please contact us.



Call Woodford Green Branch 020 8505 6343 ■ douglasallen.co.uk



■ Legal advice should be taken to verify fixtures/fittings, planning, alterations and/or lease details ■ Appliances & services are untested, dimensions are approximate and floor plans are not to scale



53619296/20251122/CP1/SP