



Price
£525,000

Freehold

2x  1x  1x 

**Ray Lodge Road,
Woodford Green,
Woodford Green, Essex,
IG8**

OVER 60?

Secure this property
for up to **59% less!**

 **DOUGLAS
ALLEN**
Helping you move forwards



Main features

- Garage and access to the rear garden at the rear
- Off street parking to the front
- Situated amongst excellent school catchment areas
- Within close proximity to **Woodford Central Line station**
- Close to local amenities

Accommodation

GROUND FLOOR

Entrance Hall

Lounge: 23'4 (7.12m) x 10'10 (3.30m)
narrowing to 8'11 (2.72m)

Kitchen: 13'7 x 7'7 (4.14m x 2.31m)

FIRST FLOOR

Landing

Bedroom 1: 14'7 x 11'2 (4.45m x 3.41m)

Bedroom 2: 11'7 x 8'10 (3.53m x 2.69m)

Bathroom

OUTSIDE

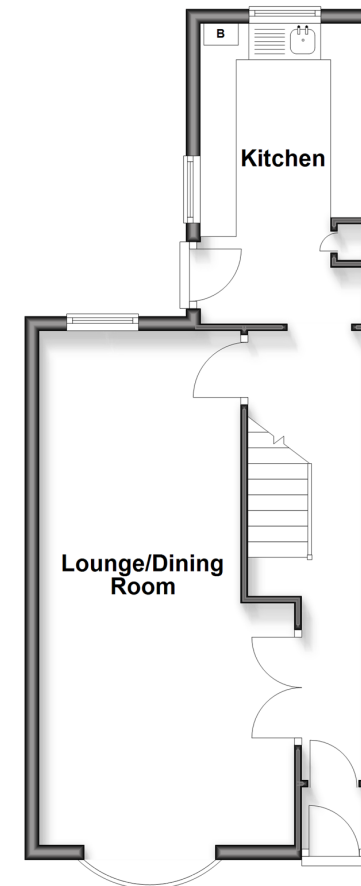
Garage

Off Street Parking

Rear Garden

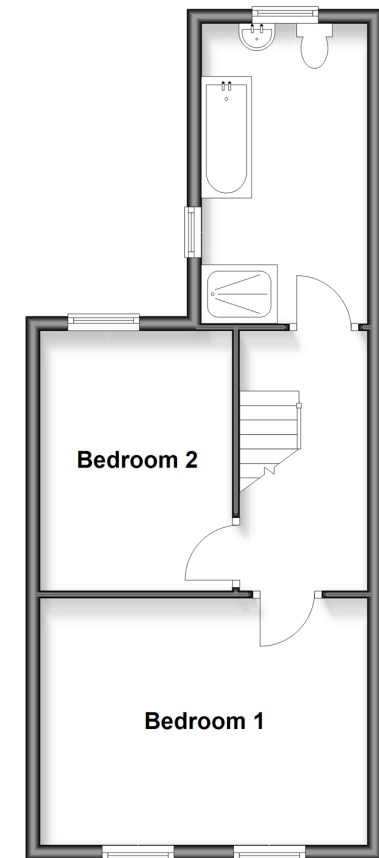
Ground Floor

Approx. 42.5 sq. metres (457.9 sq. feet)



First Floor

Approx. 42.3 sq. metres (455.0 sq. feet)



Call Woodford Green - 020 8505 6343 ■ douglasallen.co.uk

- Legal advice should be taken to verify fixtures/fittings, planning, alterations and/or lease details
- Appliances & services are untested, dimensions are approximate and floor plans are not to scale
- Through a Homewise Home For Life Plan people aged 60+ can secure this property for up to 50% less, by purchasing a Lifetime Lease.



53619253/20250816/DR/RUM