



OVER 60?

Secure this property
for up to **59% less!**

Price

£575,000

Freehold

3x  1x  1x 

**Sky Peals Road,
Woodford Green, Essex,
IG8**

 **DOUGLAS
ALLEN**
Helping you move forwards



Main features

- Beautiful semi detached house
- Driveway
- Large rear garden
- Close proximity to Highams Park Station as well as local amenities
- Potential to extend to the rear and into the loft(subject to planning permission)

Accommodation

GROUND FLOOR

Hallway
 Lounge/Kitchen Area: 22'10 x 10'0 (6.96m x 3.05m)
 Dining Area: 10'10 x 9'9 (3.30m x 2.97m)
 Family Room: 10'0 x 9'10 (3.05m x 3.00m)
 Cloakroom

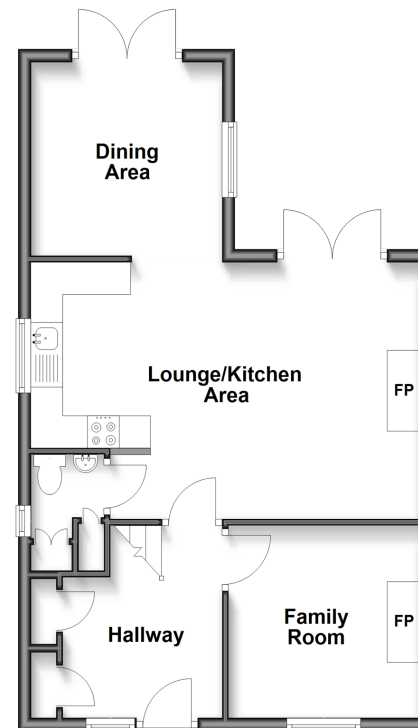
FIRST FLOOR

Landing
 Bedroom 1: 13'1 x 12'1 (3.99m x 3.69m)
 Bedroom 2: 10'0 x 9'11 (3.05m x 3.02m)
 Bedroom 3: 9'6 x 7'4 (2.90m x 2.24m)
 Bathroom

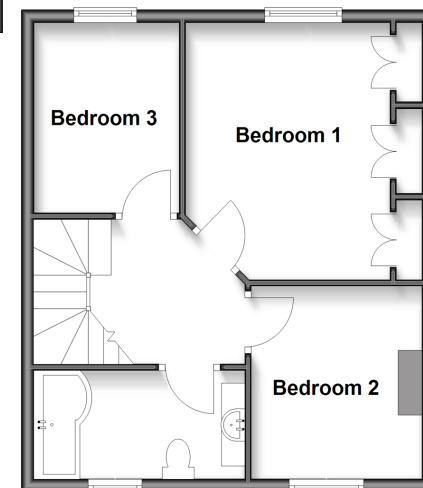
OUTSIDE

Driveway
 Rear Garden

Ground Floor
 Approx. 52.3 sq. metres (563.0 sq. feet)



First Floor
 Approx. 43.0 sq. metres (462.9 sq. feet)



Call Woodford Green - 020 8505 6343 ■ douglasallen.co.uk

- Legal advice should be taken to verify fixtures/fittings, planning, alterations and/or lease details
- Appliances & services are untested, dimensions are approximate and floor plans are not to scale
- Through a Homewise Home For Life Plan people aged 60+ can secure this property for up to 59% less, by purchasing a Lifetime Lease.



53618923/20250719/SP/RUM