



Price
£550,000

Freehold

3x  1x  2x 

**Roding Lane North,
Woodford Green, Essex,
IG8**

OVER 60?

Secure this property
for up to **59% less!**

 **DOUGLAS
ALLEN**
Helping you move forwards



Main features

- 3 bedroom end of terrace house
- Lounge and Dining Room
- Driveway
- Potential to extend(subject to planning permission)
- Close proximity to Roding Primary School and local shops

Accommodation

GROUND FLOOR

Entrance Hall

Lounge: 13'11 x 11'0 (4.24m x 3.36m)

Dining Room: 11'8 x 10'2 (3.56m x 3.10m)

Kitchen: 8'4 x 5'8 (2.54m x 1.73m)

FIRST FLOOR

Landing

Bedroom 1: 11'9 x 10'6 (3.58m x 3.20m)

Bedroom 2: 11'9 x 9'11 (3.58m x 3.02m)

Bedroom 3: 8'4 x 5'11 (2.54m x 1.80m)

Shower Room

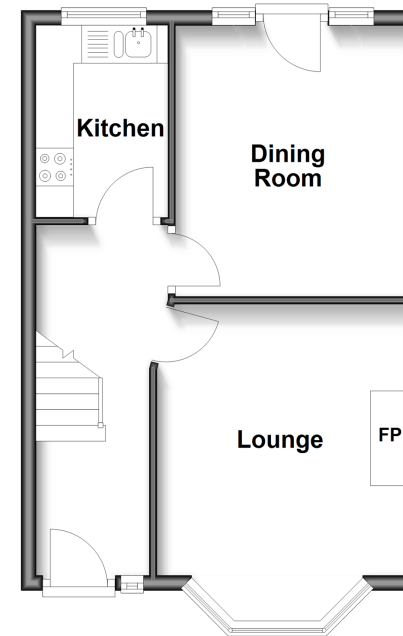
OUTSIDE

Driveway

Rear Garden

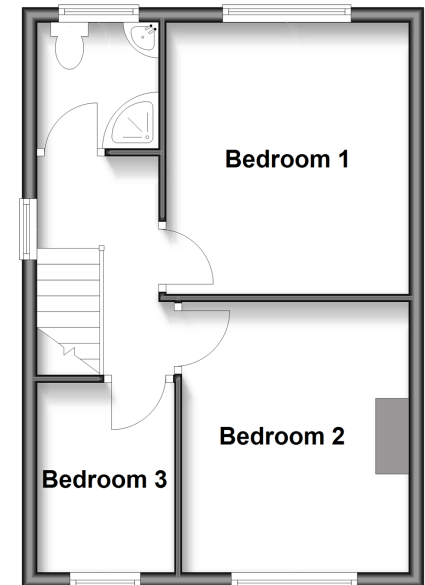
Ground Floor

Approx. 36.3 sq. metres (390.8 sq. feet)



First Floor

Approx. 36.0 sq. metres (387.1 sq. feet)



Call Woodford Green - 020 8505 6343 ■ douglasallen.co.uk

- Legal advice should be taken to verify fixtures/fittings, planning, alterations and/or lease details
- Appliances & services are untested, dimensions are approximate and floor plans are not to scale
- Through a Homewise Home For Life Plan people aged 60+ can secure this property for up to 59% less, by purchasing a Lifetime Lease.



53619167/20250621/SP/SP