



Price

£550,000

Leasehold

3x  2x  1x 

**Freshmans House,
Queen Mary Avenue,
South Woodford, E18**

OVER 60?

Secure this property
for up to **59% less!**

 **DOUGLAS
ALLEN**
Helping you move forwards



Main features

- **Spacious 1st floor apartment**
- **24 hour concierge**
- **Underground parking**
- **En-suite to main bedroom and private balcony**
- **Stones throw away to 'George Lane' providing great amenities**

Accommodation

FIRST FLOOR

Entrance Hall

Lounge/Kitchen/Dining Room: 26'3 (8.01m) x 18'7 (5.67m) narrowing to 11'8 (3.56m)

Balcony

Bedroom 1: 12'3 (3.74m) x 12'0 (3.66m) narrowing to 4'4 (1.32m)

En-Suite Shower Room

Bedroom 2: 15'8 x 8'4 (4.78m x 2.54m)

Bedroom 3: 14'4 x 10'2 (4.37m x 3.10m)

Bathroom

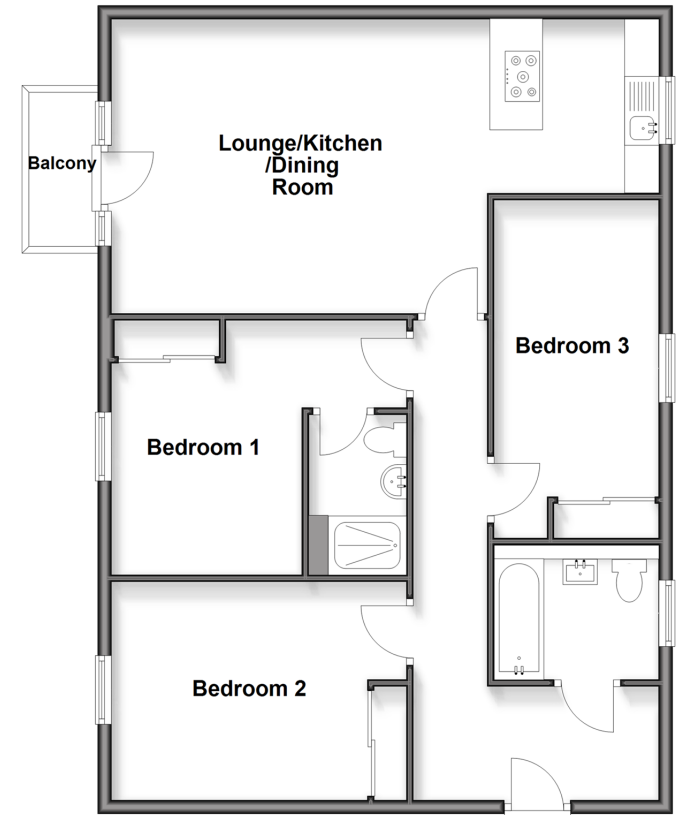
OUTSIDE

Allocated Parking Space

Communal Gardens

First Floor

Approx. 90.5 sq. metres (974.0 sq. feet)



Call Woodford Green - 020 8505 6343 ■ douglasallen.co.uk

- Legal advice should be taken to verify fixtures/fittings, planning, alterations and/or lease details
- Appliances & services are untested, dimensions are approximate and floor plans are not to scale
- Through a Homewise Home For Life Plan people aged 60+ can secure this property for up to 59% less, by purchasing a Lifetime Lease.



53619189/20250509/LA/RUM