



OVER 60?

Secure this property
for up to **59% less!**

Price

£725,000

Freehold

3x  2x  1x 

**Park View, Chigwell,
Essex, IG7**

 **DOUGLAS
ALLEN**
Helping you move forwards



Main features

- 3 bedroom detached house
- Modern and stylish kitchen/diner
- Well proportioned bedrooms
- Air conditioning and air source heat pump heating
- Low maintenance rear garden as well as double detached carport

Accommodation

GROUND FLOOR

Entrance Hall
 Lounge : 16'11 x 9'9 (5.16m x 2.97m)
 Kitchen/Diner: 21'2 x 10'5 (6.46m x 3.18m)
 Utility Room: 6'6 x 5'1 (1.98m x 1.55m)
 Cloakroom

FIRST FLOOR

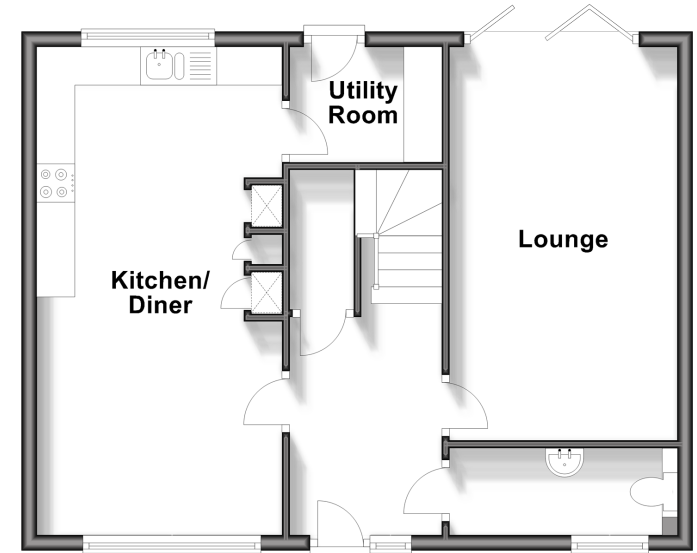
Landing
 Bedroom 1: 14'5 x 9'11 (4.40m x 3.02m)
 En-Suite Shower Room
 Bedroom 2: 12'7 x 8'8 (3.84m x 2.64m)
 Bedroom 3: 9'4 x 6'11 (2.85m x 2.11m)
 Bathroom

OUTSIDE

Rear Garden
 Car Port

Ground Floor

Approx. 53.5 sq. metres (575.7 sq. feet)



First Floor

Approx. 53.5 sq. metres (575.7 sq. feet)



Call Chigwell - 020 8501 2131 ■ douglasallen.co.uk

- A private rental licensing scheme applies to some properties in this area, please contact us before proceeding
- Legal advice should be taken to verify fixtures/fittings, planning, alterations and/or lease details
- Appliances & services are untested, dimensions are approximate and floor plans are not to scale
- Through a Homewise Home For Life Plan people aged 60+ can secure this property for up to 50% less, by purchasing a Lifetime Lease.

