



OVER 60?

Secure this property
for up to **59% less!**

Price

£650,000

Freehold

2x  2x  1x 

**Anworth Close,
Woodford Green,
Woodford Green, Essex,
IG8**

 **DOUGLAS
ALLEN**
Helping you move forwards



Main features

- 2 bedroom house
- Garage en bloc
- Modern throughout
- Fantastic location, close to the Broadway shops
- Conveniently located for Woodford Central Line Station

Accommodation

GROUND FLOOR

Entrance Hall

Lounge: 14'9 x 12'10 (4.50m x 3.91m)

Kitchen/Dining Room: 12'5 x 10'0 (3.79m x 3.05m) plus 9'0 x 9'0 (2.75m x 2.75m)

Utility Room: 12'4 x 8'2 (3.76m x 2.49m)

FIRST FLOOR

Landing

Bedroom 1: 13'9 x 12'2 (4.19m x 3.71m)

En-Suite Shower Room

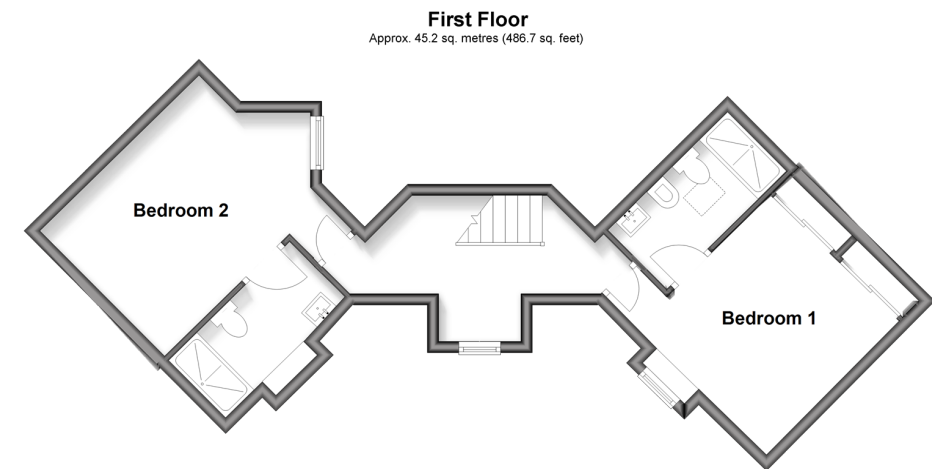
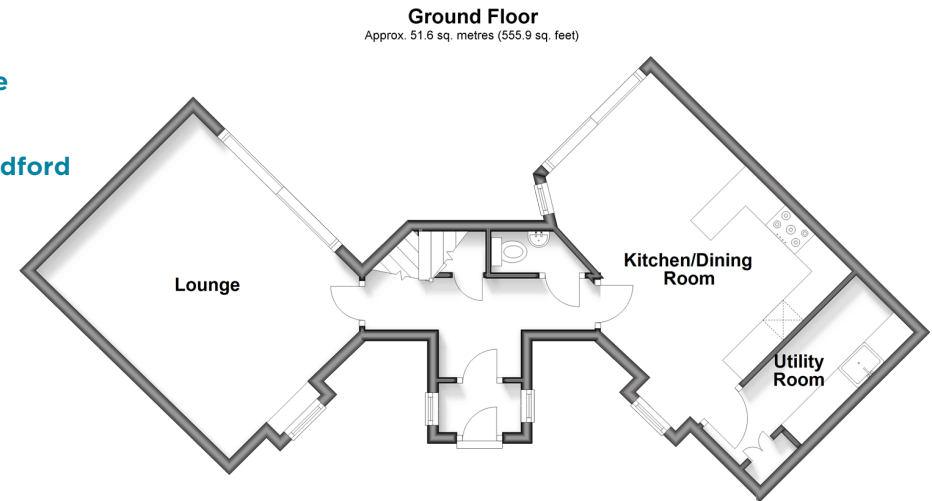
Bedroom 2: 10'0 x 10'0 (3.05m x 3.05m)

En-Suite Shower Room

OUTSIDE

Rear Garden

Garage



Call Woodford Green - 020 8505 6343 ■ douglasallen.co.uk

- Legal advice should be taken to verify fixtures/fittings, planning, alterations and/or lease details
- Appliances & services are untested, dimensions are approximate and floor plans are not to scale
- Through a Homewise Home For Life Plan people aged 60+ can secure this property for up to 59% less, by purchasing a Lifetime Lease.



53615094/20250423/LA/PA