



Price

£625,000

Leasehold

2x  2x  1x 

**Legacy Tower, Great
Eastern Road, London,
E15**

OVER 60?

Secure this property
for up to **59% less!**



**DOUGLAS
ALLEN**

Helping you move forwards



Main features

- Beautiful 7th floor apartment
- Spacious open plan lounge/kitchen
- Large decked terrace
- Access to the communal gym, bike storage and 24 hour concierge
- Stones throw away from Westfield Shopping Centre & Stratford Station

Accommodation

SEVENTH FLOOR

Entrance Hall

Lounge/Kitchen/Dining Room: 21'6 x 16'1
(6.56m x 4.91m)

Bedroom 1: 16'10 x 8'11 (5.13m x 2.72m)

En-suite Shower Room

Bedroom 2: 14'2 x 9'7 (4.32m x 2.92m)

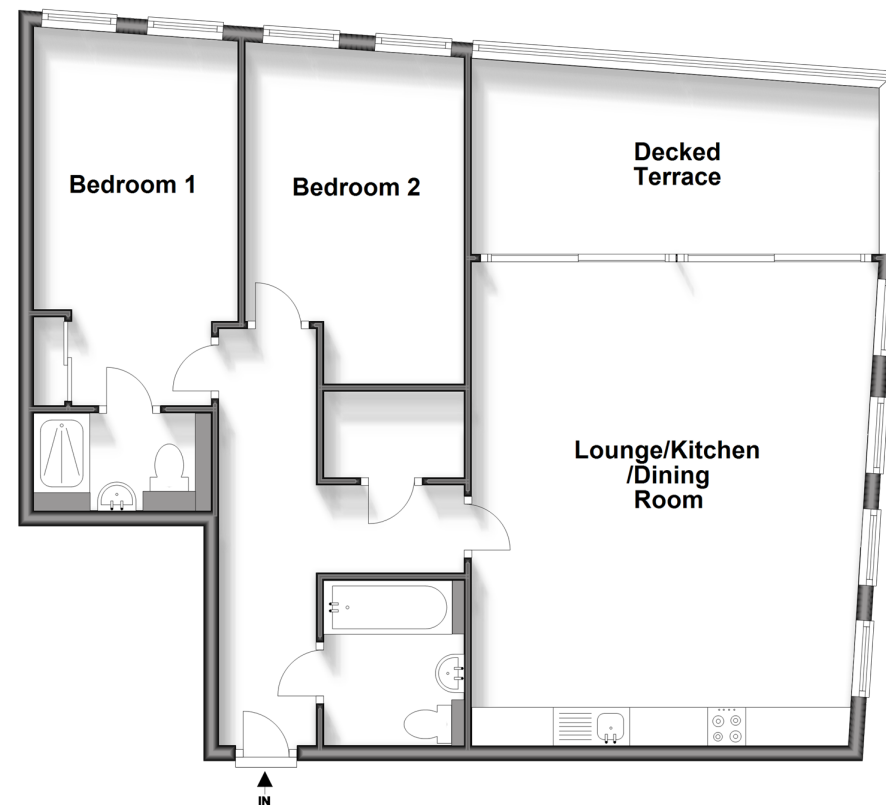
Bathroom

OUTSIDE

Decked Terrace

Seventh Floor

Approx. 80.1 sq. metres (862.7 sq. feet)



Call Wanstead - 020 8530 3741 ■ douglasallen.co.uk

- A private rental licensing scheme applies to some properties in this area, please contact us before proceeding
- Legal advice should be taken to verify fixtures/fittings, planning, alterations and/or lease details
- Appliances & services are untested, dimensions are approximate and floor plans are not to scale
- Through a Homewise Home For Life Plan people aged 60+ can secure this property for up to 59% less, by purchasing a Lifetime Lease.

