



Price
£750,000

Freehold

3x  1x  2x 

**Horn Lane, Woodford
Green, Essex, IG8**

 **DOUGLAS
ALLEN**
Helping you move forwards



Main features

- 3 bedroom semi detached house
- Wonderful rear garden
- Potential to extend(STPP)
- Fantastic location, close to Woodford Green Station, shops and local amenities
- Ideal for those looking to put their own stamp on it and make it their ideal home

Accommodation

GROUND FLOOR

Entrance Hall

Lounge: 18'9 x 14'4 (5.72m x 4.37m)

Dining Room: 13'9 x 11'0 (4.19m x 3.36m)

Kitchen/Breakfast Room: 11'10 x 11'0 (3.61m x 3.36m)

Lean-to

Cloakroom

FIRST FLOOR

Landing

Bedroom 1: 14'6 x 11'5 (4.42m x 3.48m)

Bedroom 2: 11'0 x 11'0 (3.36m x 3.36m)

Bedroom 3: 11'2 x 9'4 (3.41m x 2.85m)

Bathroom

Separate Toilet

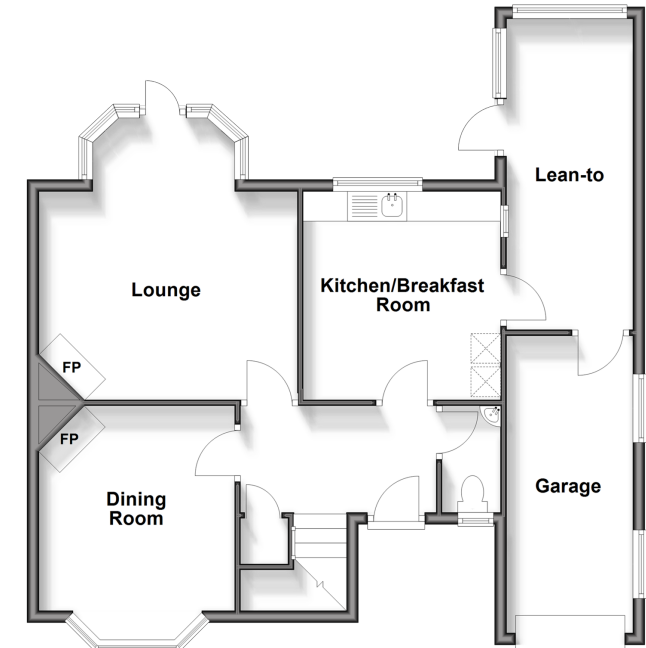
OUTSIDE

Rear Garden

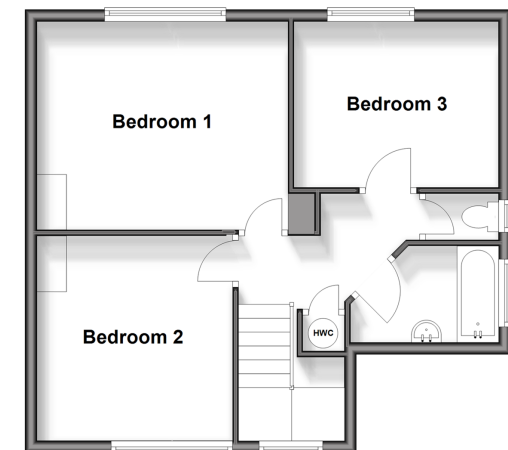
Garage

Off Street Parking

Ground Floor
Approx. 76.1 sq. metres (819.4 sq. feet)

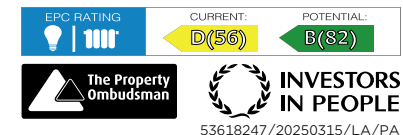


First Floor
Approx. 50.5 sq. metres (544.0 sq. feet)



Call Woodford Green - 020 8505 6343 ■ douglasallen.co.uk

- Legal advice should be taken to verify fixtures/fittings, planning, alterations and/or lease details
- Appliances & services are untested, dimensions are approximate and floor plans are not to scale



53618247/20250315/LA/PA