



OVER 60?

Secure this property
for up to **59% less!**

Price

£600,000

Freehold

3x  2x  1x 

**Chingford Lane,
Woodford Green, Essex,
IG8**

 **DOUGLAS
ALLEN**
Helping you move forwards



Main features

- Double bedrooms
- En-suite in Bedroom 1
- Utility area
- Lovely location within easy access to Highams Park & Woodford Golf Club
- Great transport links & Woodford Green High Street close by

Accommodation

GROUND FLOOR

Entrance Porch
Hallway
Lounge: 10'11 x 9'3 (3.33m x 2.82m)
Dining Area: 11'2 x 9'11 (3.41m x 3.02m)
Kitchen: 13'7 x 8'0 (4.14m x 2.44m)
Utility/Cloakroom

FIRST FLOOR

Landing
Bedroom 2: 15'8 x 8'3 (4.78m x 2.52m)
Bedroom 3: 12'0 x 7'0 (3.66m x 2.14m)
Shower Room

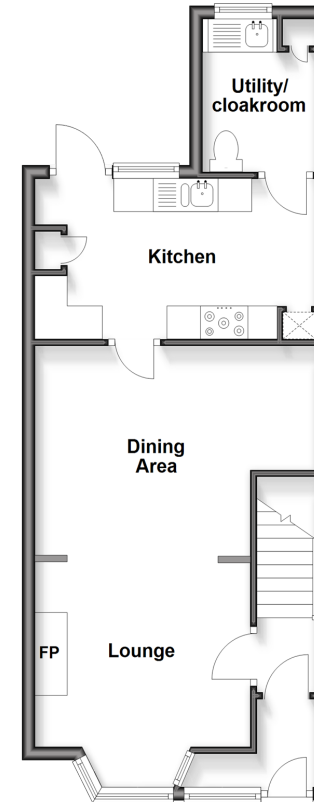
SECOND FLOOR

Landing
Bedroom 1: 12'0 x 9'0 (3.66m x 2.75m)
En-suite

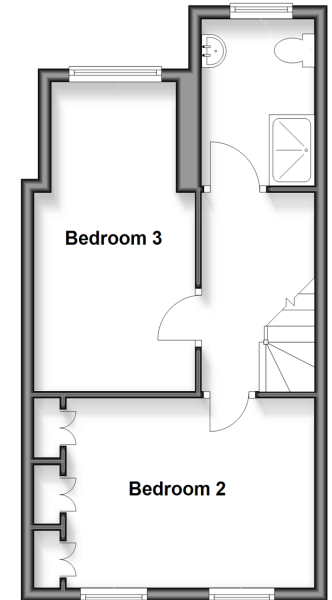
OUTSIDE

Front & Rear Garden

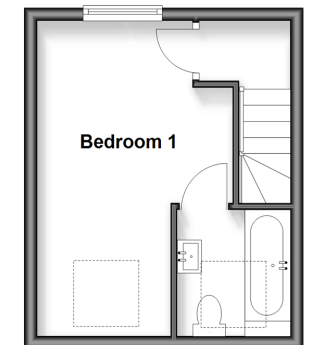
Ground Floor
Approx. 43.5 sq. metres (467.8 sq. feet)



First Floor
Approx. 33.6 sq. metres (361.9 sq. feet)



Second Floor
Approx. 18.6 sq. metres (199.8 sq. feet)



Call Woodford Green - 020 8505 6343 ■ douglasallen.co.uk

- Legal advice should be taken to verify fixtures/fittings, planning, alterations and/or lease details
- Appliances & services are untested, dimensions are approximate and floor plans are not to scale
- Through a Homewise Home For Life Plan people aged 60+ can secure this property for up to 59% less, by purchasing a Lifetime Lease.



53619106/20250412/LA/PA