



OVER 60?

Secure this property
for up to **59% less!**

Price

£750,000

Freehold

3x  2x  1x 

**Bradfords Close,
Buckhurst Hill, Essex,
IG9**

 **DOUGLAS
ALLEN**
Helping you move forwards



Main features

- 3 double bedroom semi detached house
- Gated community
- 2 designated parking spaces - Driveway and allocated bay
- Modern open plan living
- Within close proximity to Roding Valley Train Station

Accommodation

GROUND FLOOR

Entrance Hall
Lounge: 12'9 x 11'2 (3.89m x 3.41m)
Kitchen/Dining Area: 28'9 x 13'3 (8.77m x 4.04m)
Utility Room
Cloakroom

FIRST FLOOR

Landing
Bedroom 2: 11'0 x 11'0 (3.36m x 3.36m)
Bedroom 3: 13'0 x 8'0 (3.97m x 2.44m)
Bathroom

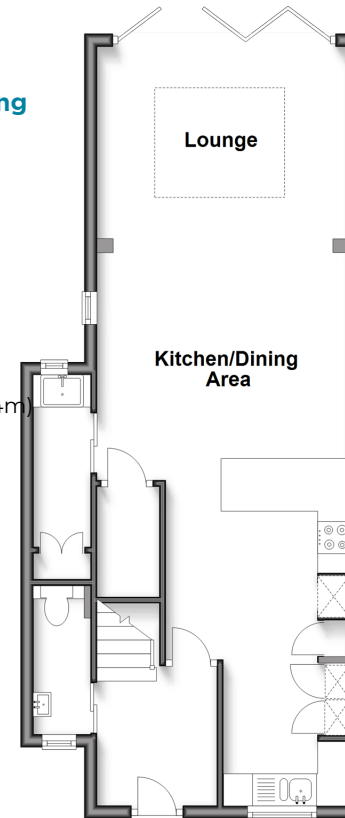
SECOND FLOOR

Landing
Bedroom 1: 13'3 x 11'8 (4.04m x 3.56m)
En-Suite Bath/Shower Room

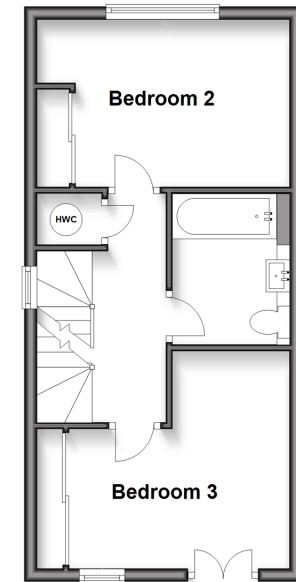
OUTSIDE

Off Street Parking

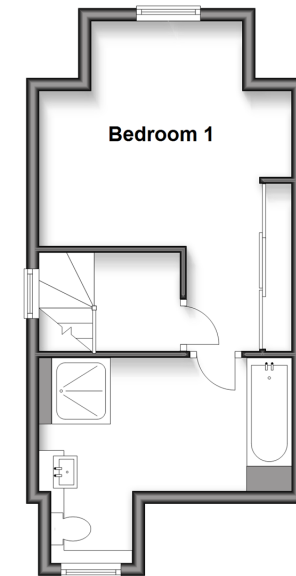
Ground Floor
Approx. 52.0 sq. metres (559.9 sq. feet)



First Floor
Approx. 33.6 sq. metres (361.5 sq. feet)



Second Floor
Approx. 28.5 sq. metres (306.4 sq. feet)



Call Woodford Green - 020 8505 6343 ■ douglasallen.co.uk

- Legal advice should be taken to verify fixtures/fittings, planning, alterations and/or lease details
- Appliances & services are untested, dimensions are approximate and floor plans are not to scale
- Through a Homewise Home For Life Plan people aged 60+ can secure this property for up to 59% less, by purchasing a Lifetime Lease.



53619084/20250315/LA/PA