



Price
£650,000

Freehold

4x  2x  3x 

**Oakhurst Close,
Barkingside, Essex, IG6**

OVER 60?

Secure this property
for up to **59% less!**

 **DOUGLAS
ALLEN**
Helping you move forwards



Main features

- 4 bedroom semi detached house
- Lounge, dining room & family room
- Quiet cul De sac location
- Easy access to Fairlop Central Line Station, for the daily commute
- 2 bathrooms and a utility room providing ample space

Accommodation

GROUND FLOOR

Entrance Hall

Lounge: 16'6 x 11'2 (5.03m x 3.41m)

Dining Room: 17'3 x 7'9 (5.26m x 2.36m)

Family Room: 10'1 x 8'11 (3.08m x 2.72m)

Kitchen: 10'8 x 9'4 (3.25m x 2.85m)

Cloakroom

FIRST FLOOR

Landing

Bedroom 1: 11'0 x 10'1 (3.36m x 3.08m)

En-Suite

Bedroom 2: 10'6 x 9'9 (3.20m x 2.97m)

Bedroom 3: 9'11 x 7'5 (3.02m x 2.26m)

Bedroom 4: 8'10 x 7'1 (2.69m x 2.16m) plus
9'8 x 7'5 (2.95m x 2.26m)

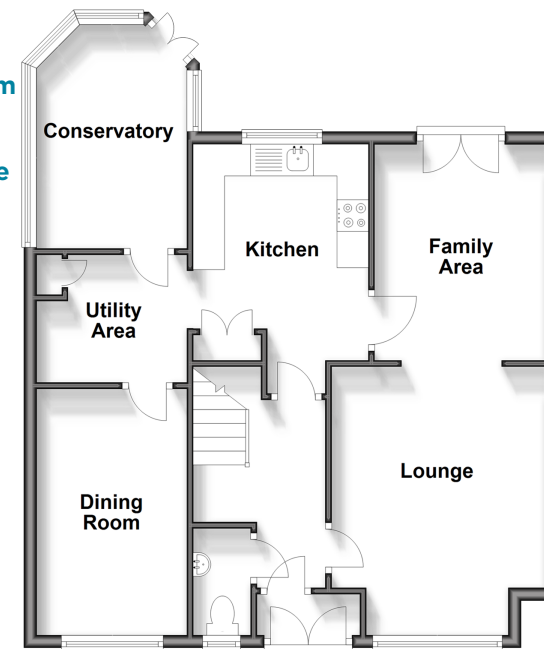
Bathroom

OUTSIDE

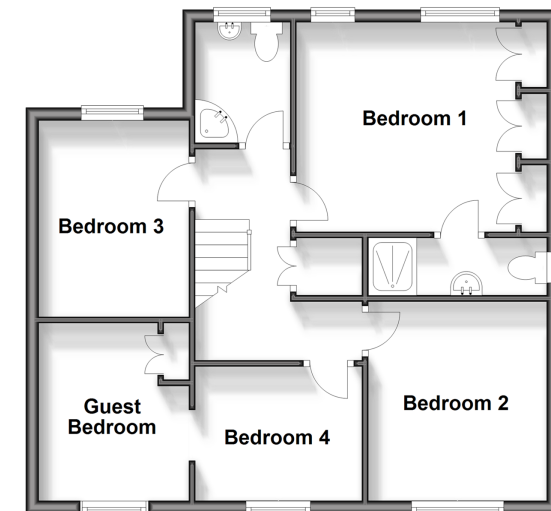
Driveway

Rear Garden

Ground Floor
Approx. 66.2 sq. metres (712.4 sq. feet)



First Floor
Approx. 57.2 sq. metres (615.3 sq. feet)



Call Woodford Green - 020 8505 6343 ■ douglasallen.co.uk

- Legal advice should be taken to verify fixtures/fittings, planning, alterations and/or lease details
- Appliances & services are untested, dimensions are approximate and floor plans are not to scale
- Through a Homewise Home For Life Plan people aged 60+ can secure this property for up to 59% less, by purchasing a Lifetime Lease.



53619073/20250614/SP/SP