



Price
£325,000

Leasehold

2x  1x  1x 

**Devereux Court, Snakes
Lane West, Woodford
Green, Essex, IG8**

OVER 60?

Secure this property
for up to **59% less!**

 **DOUGLAS
ALLEN**
Helping you move forwards



Main features

- 2 bedroom retirement home
- Residents lounge
- Underfloor heating
- Stunning modern flat ready to move straight into
- Great location with Woodford Green High Street nearby, local shops and train station

Accommodation

SECOND FLOOR

Entrance Hall

Lounge/Diner: 20'1 x 9'10 (6.13m x 3.00m)

Kitchen: 7'5 x 4'11 (2.26m x 1.50m)

Bedroom 1: 16'3 x 9'0 (4.96m x 2.75m)

Bedroom 2: 14'11 x 9'0 (4.55m x 2.75m)

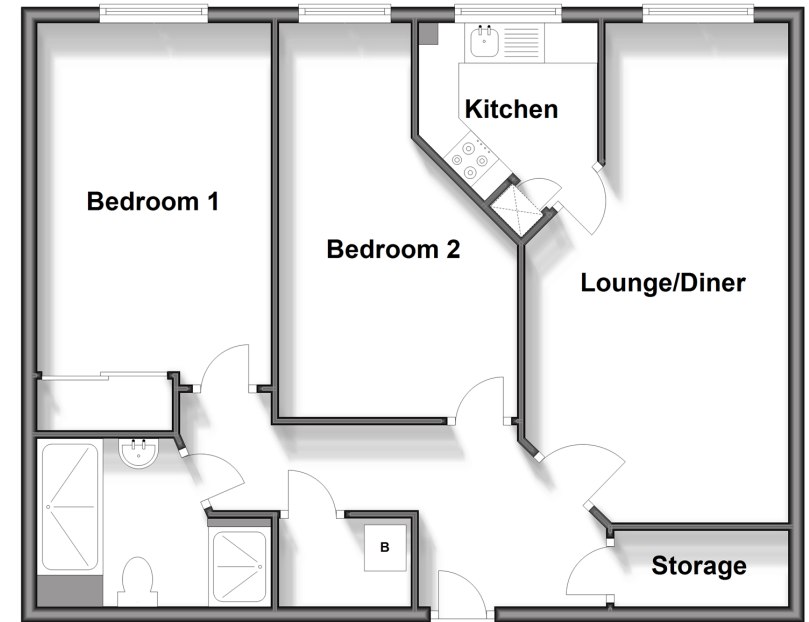
Shower Room

OUTSIDE

Communal Gardens

Second Floor

Approx. 68.3 sq. metres (734.9 sq. feet)



Call Woodford Green - 020 8505 6343 ■ douglasallen.co.uk

- Legal advice should be taken to verify fixtures/fittings, planning, alterations and/or lease details
- Appliances & services are untested, dimensions are approximate and floor plans are not to scale
- Through a Homewise Home For Life Plan people aged 60+ can secure this property for up to 59% less, by purchasing a Lifetime Lease.



53619176/20250226/PA/PA