



Price
£725,000

Freehold

4x  2x  2x 

**Walnut Way, Buckhurst
Hill, Essex, IG9**

OVER 60?

Secure this property
for up to **59% less!**

 **DOUGLAS
ALLEN**
Helping you move forwards



Main features

- Extended semi detached house
- Large kitchen area
- 3 bathrooms
- Superb sized rear garden as well as off road parking to the front
- Close by to local shops and Roding Valley Station

Accommodation

GROUND FLOOR

Entrance Hall
 Lounge: 13'11 x 11'0 (4.24m x 3.36m)
 Family Area: 13'0 x 11'0 (3.97m x 3.36m)
 Kitchen: 18'0 x 11'0 (5.49m x 3.36m)
 Utility Room
 Shower Room

FIRST FLOOR

Landing
 Bedroom 2: 14'3 x 8'10 up to fitted wardrobes (4.35m x 2.69m)
 Bedroom 3: 13'1 x 10'8 (3.99m x 3.25m)
 Bedroom 4: 8'1 x 7'4 (2.47m x 2.24m)
 Bathroom

SECOND FLOOR

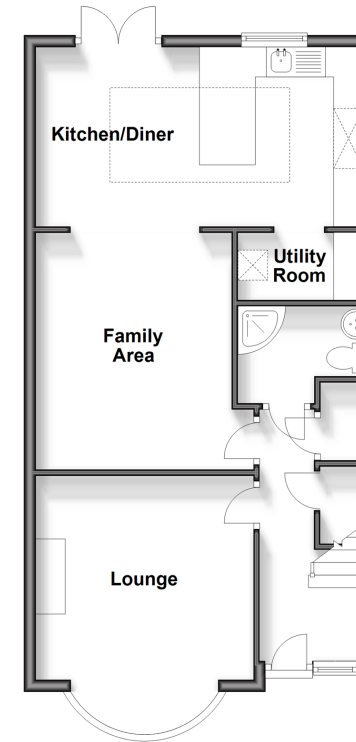
Landing
 Bedroom 1: 16'3 x 8'1 (4.96m x 2.47m)
 En-Suite Shower Room

OUTSIDE

Rear Garden
 Driveway

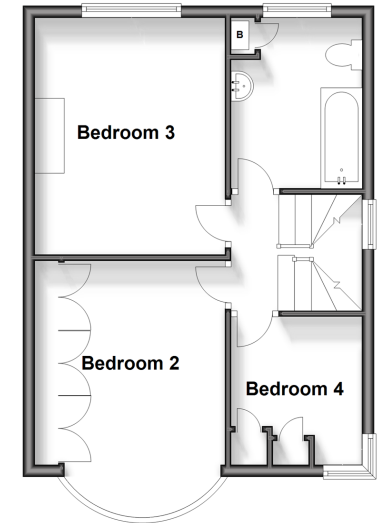
Ground Floor

Approx. 58.4 sq. metres (628.5 sq. feet)



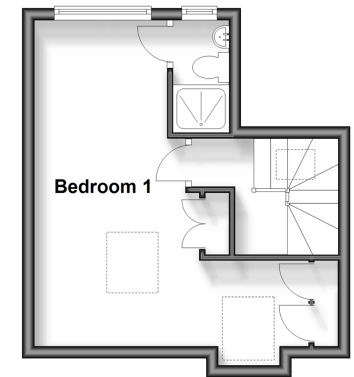
First Floor

Approx. 41.8 sq. metres (450.3 sq. feet)



Second Floor

Approx. 24.7 sq. metres (266.2 sq. feet)



Call Woodford Green - 020 8505 6343 ■ douglasallen.co.uk

- Legal advice should be taken to verify fixtures/fittings, planning, alterations and/or lease details
- Appliances & services are untested, dimensions are approximate and floor plans are not to scale
- Through a Homewise Home For Life Plan people aged 60+ can secure this property for up to 59% less, by purchasing a Lifetime Lease.



53618902/20250210/AMA/SP