



Price
£325,000

Leasehold

2x  1x  1x 

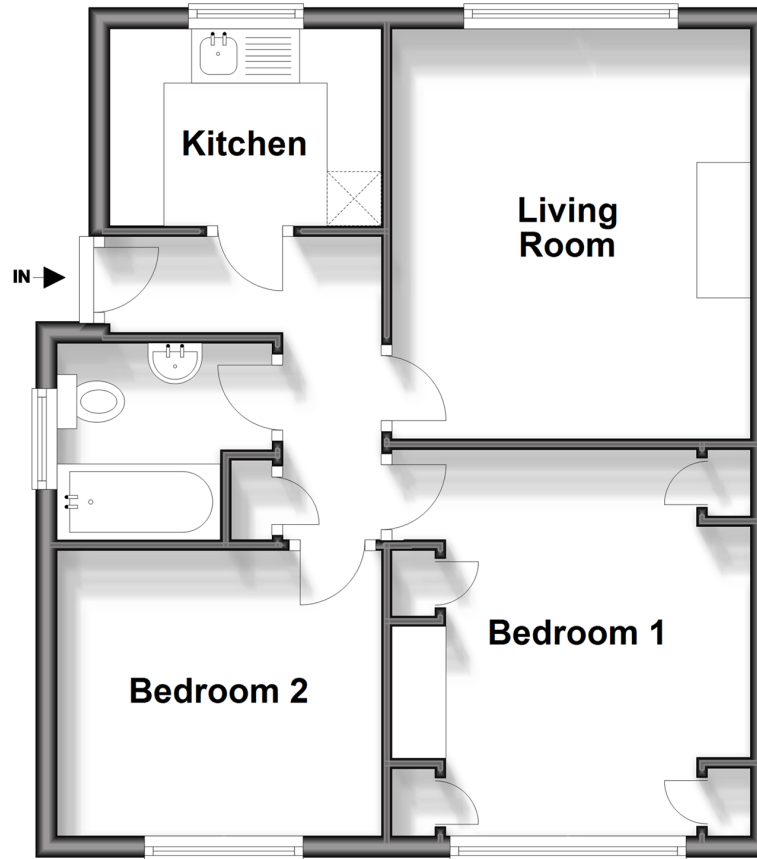
**Oak Wood Close,
Woodford Green, Essex,
IG8**

 **DOUGLAS
ALLEN**
Helping you move forwards



First Floor

Approx. 46.4 sq. metres (499.5 sq. feet)



Accommodation

FIRST FLOOR

Entrance Hall

Living Room: 12'1 x 10'10 (3.69m x 3.30m)

Kitchen: 8'0 x 5'8 (2.44m x 1.73m)

Bedroom 1: 11'9 x 10'9 (3.58m x 3.28m)

Bedroom 2: 9'11 x 8'7 (3.02m x 2.62m)

Bathroom

OUTSIDE

Rear Garden

Main features

- 2 bedroom 1st floor maisonette
- Private rear garden
- Spacious accommodation
- Cul-De-sac location within a short distance to shops and schools
- Offered with vacant possession and no onward chain

Call Woodford Green - 020 8505 6343 ■ douglasallen.co.uk

- A private rental licensing scheme applies to some properties in this area, please contact us before proceeding
- Legal advice should be taken to verify fixtures/fittings, planning, alterations and/or lease details
- Appliances & services are untested, dimensions are approximate and floor plans are not to scale



53618987/20241008/SP/SP