



Price
£350,000

Leasehold

2x  1x  1x 

**Broomhill Court,
Broomhill Road,
Woodford Green, Essex,
IG8**

OVER 60?

Secure this property
for up to **59% less!**

 **DOUGLAS
ALLEN**
Helping you move forwards



Main features

- 2 bedroom ground floor flat
- Sold with no onward chain
- Ideal purchase for first time buyers
- Within a short distance to Woodford Central Line Station, providing easy access into Central London
- In the catchment area for sought after schools; Wells Primary School and Trinity High School

Accommodation

GROUND FLOOR

Entrance Hall

Lounge: 17'1 x 13'1 (5.21m x 3.99m)

Kitchen: 10'7 x 9'1 (3.23m x 2.77m)

Bedroom 1: 12'4 x 10'7 (3.76m x 3.23m)

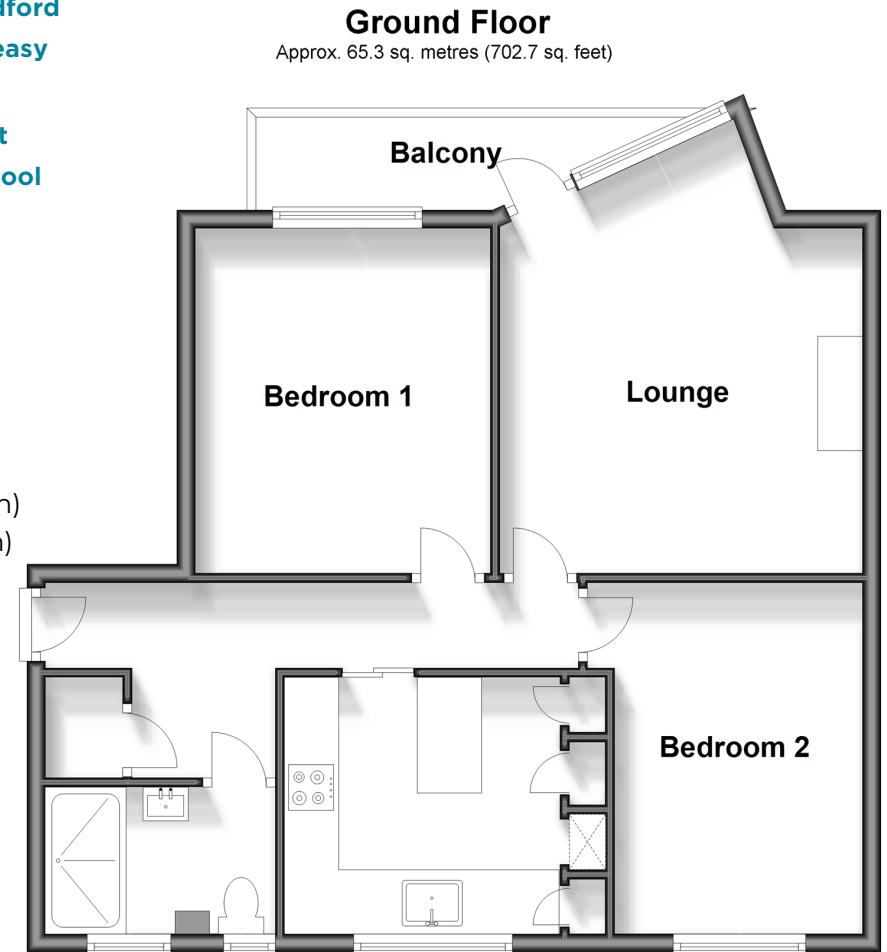
Bedroom 2: 12'9 x 8'9 (3.89m x 2.67m)

Wet Room

OUTSIDE

Communal Gardens

Off Street Parking



Call Woodford Green - 020 8505 6343 ■ douglasallen.co.uk

- A private rental licensing scheme applies to some properties in this area, please contact us before proceeding
- Legal advice should be taken to verify fixtures/fittings, planning, alterations and/or lease details
- Appliances & services are untested, dimensions are approximate and floor plans are not to scale
- Through a Homewise Home For Life Plan people aged 60+ can secure this property for up to 59% less, by purchasing a Lifetime Lease.

