



**Price**  
**£600,000**

**Freehold**

3x  1x  1x 

**Parkway, Woodford  
Green, Essex, IG8**

**OVER 60?**

Secure this property  
for up to **59% less!**

 **DOUGLAS  
ALLEN**  
Helping you move forwards



## Main features

- Well presented 3 bedroom end of terrace house
- Situated within a cul de sac
- Bright and airy rooms throughout
- Located in the heart of Woodford Green, walking distance to local amenities
- Local to excellent schools as well as Woodford Train Station

## Accommodation

### GROUND FLOOR

Entrance Hall  
 Lounge: 11'0 x 11'0 (3.36m x 3.36m)  
 Dining Area: 11'0 x 10'1 (3.36m x 3.08m)  
 Kitchen : 10'0 x 8'0 (3.05m x 2.44m)  
 Family Room: 16'0 x 8'1 (4.88m x 2.47m)

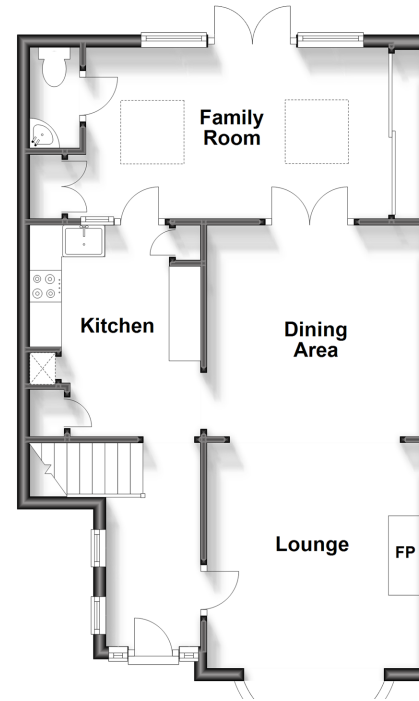
### FIRST FLOOR

Landing  
 Bedroom 1: 13'1 x 10'0 (3.99m x 3.05m)  
 Bedroom 2: 11'0 x 9'0 (3.36m x 2.75m)  
 Bedroom 3 : 10'0 x 8'0 (3.05m x 2.44m)  
 Bathroom

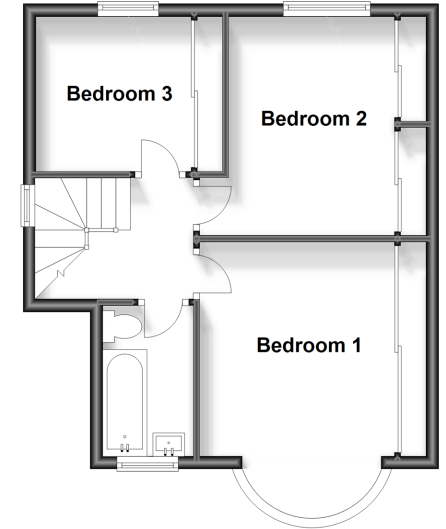
### OUTSIDE

Off Street Parking  
 Rear Garden  
 Outbuilding

**Ground Floor**  
 Approx. 57.0 sq. metres (613.6 sq. feet)



**First Floor**  
 Approx. 40.6 sq. metres (436.9 sq. feet)



**Call Woodford Green - 020 8505 6343 ■ douglasallen.co.uk**

- A private rental licensing scheme applies to some properties in this area, please contact us before proceeding
- Appliances & services are untested, dimensions are approximate and floor plans are not to scale

- Legal advice should be taken to verify fixtures/fittings, planning, alterations and/or lease details
- Through a Homewise Home For Life Plan people aged 60+ can secure this property for up to 59% less, by purchasing a Lifetime Lease.



53618845/20240420/LA/JOC