



**Price**

**£214,995**

**Leasehold**

3x  1x  1x 

**Riverside Place, Lower  
Southend Road,  
Wickford, Essex, SS11**



**DOUGLAS  
ALLEN**

Helping you move forwards





## Main features

- Presented in excellent condition
- Fourth floor apartment
- Open plan lounge featuring modern kitchen and dining space
- Juliette balcony
- Gated parking with allocated parking
- Walking distance to High Street and station

## Accommodation

### GROUND FLOOR

Communal Entrance  
Lift and Stair Access

### FOURTH FLOOR

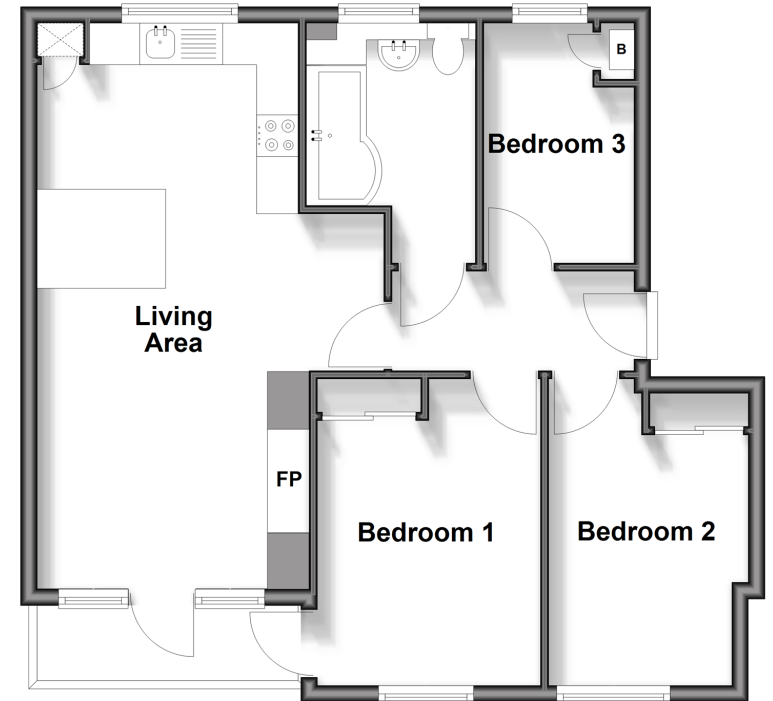
Entrance Door  
Entrance Hallway  
Living Area: 22'4 x 13'6 (6.81m x 4.12m)  
Bedroom 1: 12'1 x 8'10 (3.69m x 2.69m)  
Bedroom 2: 12'1 x 7'11 (3.69m x 2.41m)  
Bedroom 3: 9'5 x 5'10 (2.87m x 1.78m)

### OUTSIDE

Allocated Parking Space  
Balcony

## Fourth Floor

Approx. 58.0 sq. metres (624.4 sq. feet)



**Call Wickford - 01268 561287 ■ [douglasallen.co.uk](http://douglasallen.co.uk)**

- Legal advice should be taken to verify fixtures/fittings, planning, alterations and/or lease details
- Appliances & services are untested, dimensions are approximate and floor plans are not to scale



53413268/20251117/RP/BH