



**Guide Price**  
**£350,000**

**Freehold**

2x  1x  1x 

**Elizabeth Drive,  
Wickford, Essex, SS12**

**OVER 60?**

Secure this property  
for up to **59% less!**

 **DOUGLAS  
ALLEN**  
Helping you move forwards





## Main features

- Sought after location within close proximity to Wickford Primary School, Wickford town centre and mainline railway station
- Popular Keyhole Style Carter and Ward Design
- No onward Chain
- Garage and Off street Parking

## Accommodation

### GROUND FLOOR

Entrance Hallway

Lounge/Dining Room: 25'5 x 12'0  
(7.75m x 3.66m)

Kitchen: 10'0 x 9'8 (3.05m x 2.95m)

Conservatory: 10'6 x 10'3 (3.20m x 3.13m)

Bedroom 1: 11'11 x 11'6 (3.63m x 3.51m)

Bedroom 2: 11'0 x 8'6 (3.36m x 2.59m)

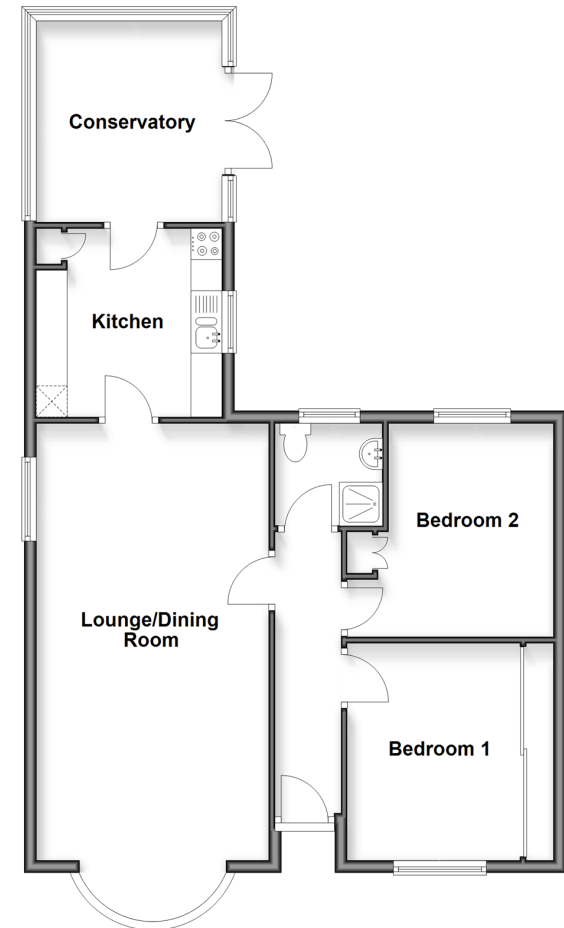
Shower Room: 5'8 x 5'5 (1.73m x 1.65m)

### OUTSIDE

Rear Garden

Off Street Parking

**Ground Floor**  
Approx. 77.6 sq. metres (835.4 sq. feet)



**Call Wickford - 01268 561287 ■ [douglasallen.co.uk](http://douglasallen.co.uk)**

- Legal advice should be taken to verify fixtures/fittings, planning, alterations and/or lease details
- Appliances & services are untested, dimensions are approximate and floor plans are not to scale
- Through a Homewise Home For Life Plan people aged 60+ can secure this property for up to 50% less, by purchasing a Lifetime Lease.



53413146/20251104/AH/BH