



**Price**  
**£360,000**

**Freehold**

3x  1x  1x 

**Crouchview Close,  
Wickford, Essex, SS11**

**OVER 60?**

Secure this property  
for up to **59% less!**

 **DOUGLAS  
ALLEN**  
Helping you move forwards





## Main features

- Excellent opportunity as a first time purchase
- Cul-de-sac location
- Ground floor cloakroom
- Attractively decorated throughout
- Great location for local schools, shops and other amenities

## Accommodation

### GROUND FLOOR

Entrance Hallway

Lounge: 15'6 x 11'5 (4.73m x 3.48m)

Kitchen/Diner: 15'10 x 12'2 (4.83m x 3.71m)

Cloakroom

### FIRST FLOOR

Landing

Bedroom 1: 10'4 x 8'11 (3.15m x 2.72m)

Bedroom 2: 11'7 x 8'10 (3.53m x 2.69m)

Bedroom 3: 7'10 x 6'3 (2.39m x 1.91m)

Bathroom

### OUTSIDE

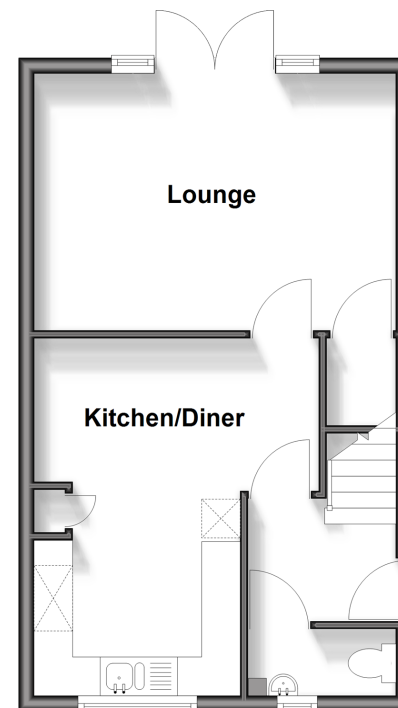
Rear Garden

Garage En Bloc

Allocated Parking

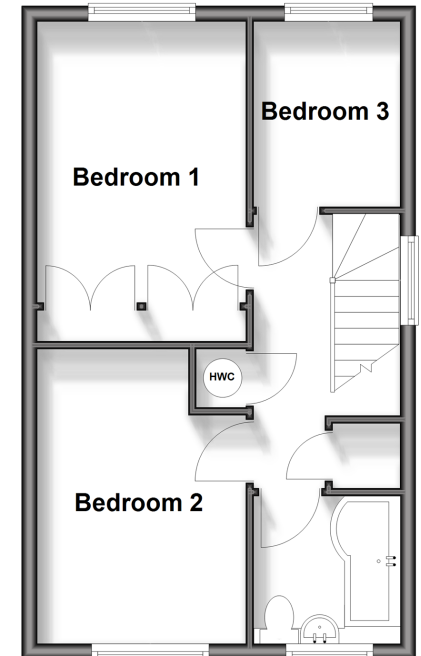
### Ground Floor

Approx. 37.7 sq. metres (405.5 sq. feet)



### First Floor

Approx. 37.8 sq. metres (407.2 sq. feet)



**Call Wickford - 01268 561287 ■ [douglasallen.co.uk](http://douglasallen.co.uk)**

- Legal advice should be taken to verify fixtures/fittings, planning, alterations and/or lease details
- Appliances & services are untested, dimensions are approximate and floor plans are not to scale
- Through a Homewise Home For Life Plan people aged 60+ can secure this property for up to 59% less, by purchasing a Lifetime Lease.



53400271/20250531/GM/AH