

CPR Certificate Not Signed

**Price**

**£470,000**

**Freehold**

4x  2x  2x 

Cunningham Drive, Wick  
Meadows, Wickford,  
Essex, SS12



**DOUGLAS  
ALLEN**

Helping you move forwards





## Main features

- Detached home with integral garage & off street parking
- Utility & Cloakroom
- En-suite to bedroom one
- Popular location within the Wick Meadow development
- Situated within close proximity to local amenities and schools

## Accommodation

### GROUND FLOOR

Entrance Hallway

Lounge: 15'3 x 11'7 (4.65m x 3.53m)

Dining Room: 9'5 x 8'8 (2.87m x 2.64m)

Kitchen: 10'6 x 9'3 (3.20m x 2.82m)

Utility Room: 6'8 x 4'9 (2.03m x 1.45m)

Cloakroom

### FIRST FLOOR

Landing

Bedroom 1: 12'11 x 10'8 (3.94m x 3.25m)

En-Suite Shower Room

Bedroom 2: 14'2 x 8'5 (4.32m x 2.57m)

Bedroom 3: 8'11 x 7'7 (2.72m x 2.31m)

Bedroom 4: 9'2 x 7'3 (2.80m x 2.21m)

Bathroom

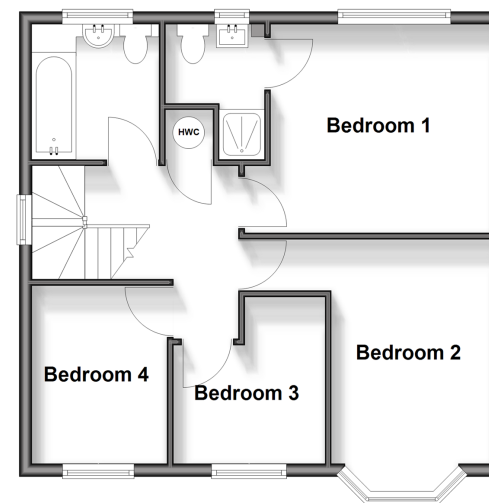
### OUTSIDE

Integral Garage

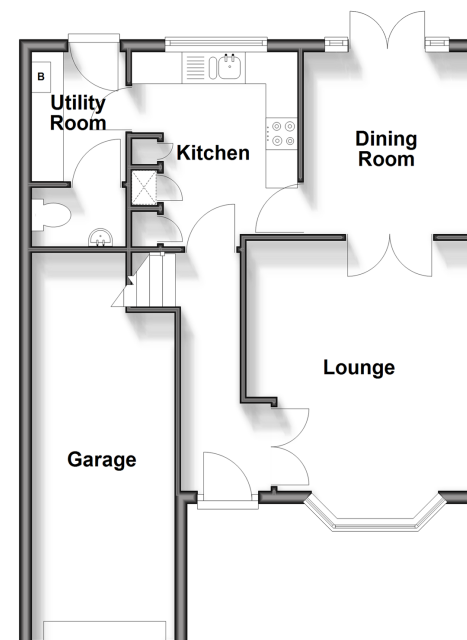
Off Street Parking

Rear Garden

**First Floor**  
Approx. 50.4 sq. metres (542.2 sq. feet)



**Ground Floor**  
Approx. 53.5 sq. metres (575.8 sq. feet)



**Call Wickford - 01268 561287 ■ [douglasallen.co.uk](http://douglasallen.co.uk)**

- Legal advice should be taken to verify fixtures/fittings, planning, alterations and/or lease details
- Appliances & services are untested, dimensions are approximate and floor plans are not to scale