



**OVER 60?**

Secure this property  
for up to **59% less!**

**Price**

**£410,000**

**Freehold**

3x  1x  2x 

**Karen Close, Wickford,  
Essex, SS12**

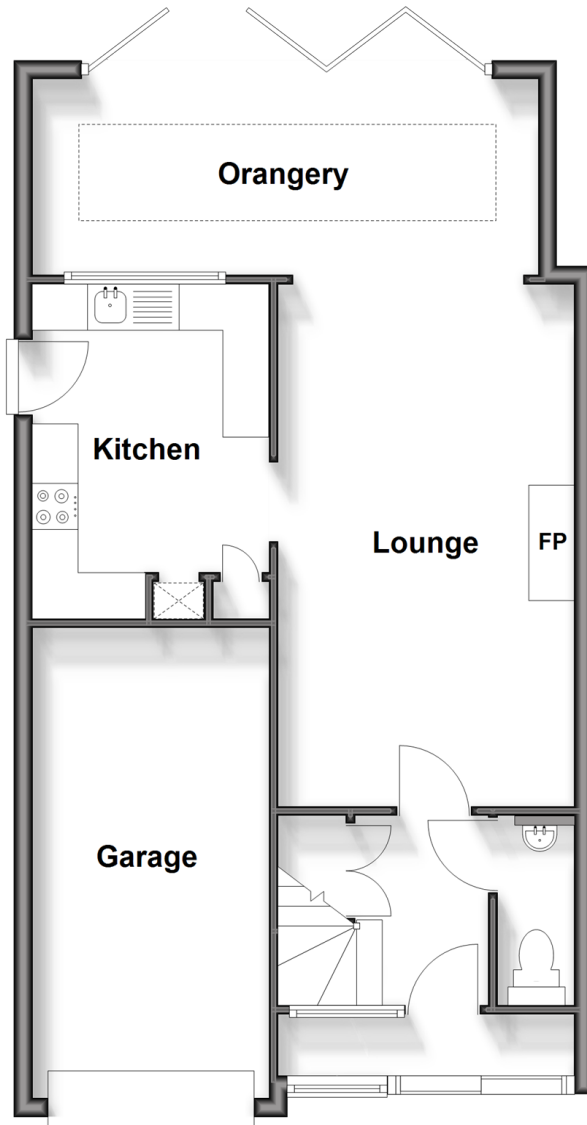


**DOUGLAS  
ALLEN**

Helping you move forwards

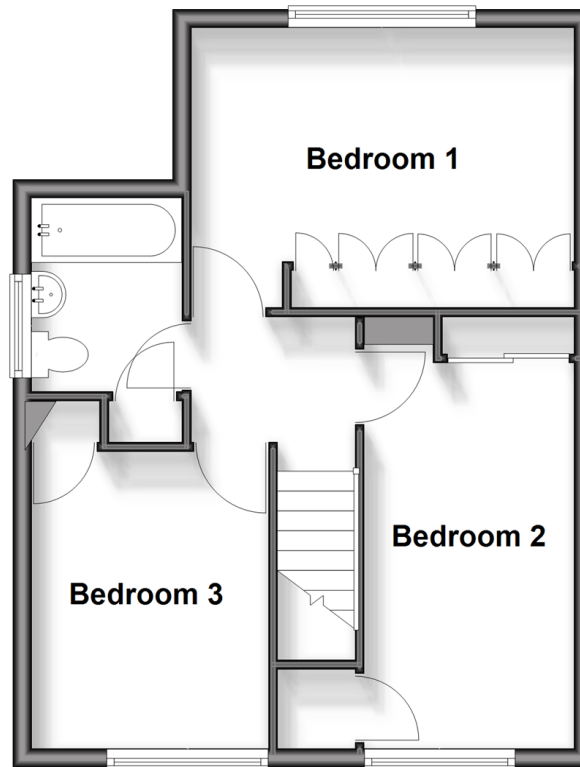
## Ground Floor

Approx. 53.4 sq. metres (575.0 sq. feet)



## First Floor

Approx. 43.0 sq. metres (462.9 sq. feet)



## Accommodation

### GROUND FLOOR

Entrance Porch

Entrance Hallway

Cloakroom

Lounge: 18'6 x 10'8 (5.64m x 3.25m)

Orangery: 18'1 x 8'1 (5.52m x 2.47m)

Kitchen: 12'6 x 8'5 (3.81m x 2.57m)

### FIRST FLOOR

Landing

Bedroom 1: 13'8 x 9'10 (4.17m x 3.00m)

Bedroom 2: 14'1 x 7'5 (4.30m x 2.26m)

Bedroom 3 : 10'5 x 8'6 (3.18m x 2.59m)

Bathroom

### OUTSIDE

Rear Garden

Garage

Off Street Parking





## Main features

- Additional orangery with bi-folding doors
- Integral garage
- Off Street Parking
- Positioned within a popular & quiet cul-de-sac location local to schools, shops and other facilities
- Downstairs cloakroom and an upstairs family bathroom



### Nearest Schools

Primary Schools: North Crescent Primary 0.4 miles, Grange Primary 0.5 miles, Oakfield Primary 0.5 miles

Secondary Schools: The Bromfords School 0.2 miles, Castledon School 0.2 miles, Beauchamps High School 1.2



### Transport Information

Train Stations: Wickford 0.7 miles, Battlesbridge 2.4 miles, Pitsea 3.3 miles



### Address

Karen Close, Wickford, Essex, SS12



### Directions

For directions to this property please contact us.



