



Price
£425,000

Freehold

3x  1x  1x 

**Robertson Drive,
Wickford, Essex, SS12**

OVER 60?

Secure this property
for up to **59% less!**

 **DOUGLAS
ALLEN**
Helping you move forwards



Main features

- Popular Location due to schools nearby
- Family Room with pitched roof
- Attractive corner plot position situated on the popular Wick Meadows development
- Attractively decorated throughout and maintained to an excellent level.

Accommodation

GROUND FLOOR

Entrance Hallway

Lounge: 23'8 x 12'8 (7.22m x 3.86m)

Kitchen: 9'2 x 7'10 (2.80m x 2.39m)

Family Room: 16'0 x 9'7 (4.88m x 2.92m)

Cloakroom

FIRST FLOOR

Landing

Bedroom 1: 10'7 x 9'7 (3.23m x 2.92m)

Bedroom 2: 11'8 x 7'11 (3.56m x 2.41m)

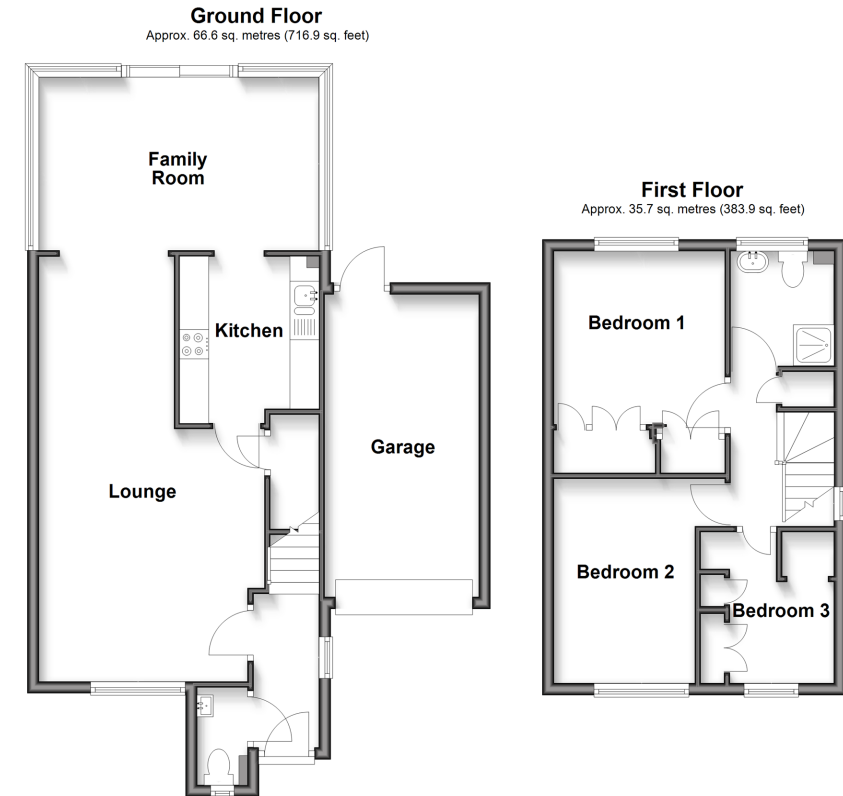
Bedroom 3: 8'5 x 7'10 (2.57m x 2.39m)

Shower Room

OUTSIDE

Garage

Rear Garden



Call Wickford - 01268 561287 ■ douglasallen.co.uk

- Legal advice should be taken to verify fixtures/fittings, planning, alterations and/or lease details
- Appliances & services are untested, dimensions are approximate and floor plans are not to scale
- Through a Homewise Home For Life Plan people aged 60+ can secure this property for up to 59% less, by purchasing a Lifetime Lease.



53412609/20250222/GM/AH