



Price

£500,000

Freehold

4x  2x  2x 

**Lennox Drive, Wickford,
Essex, SS12**

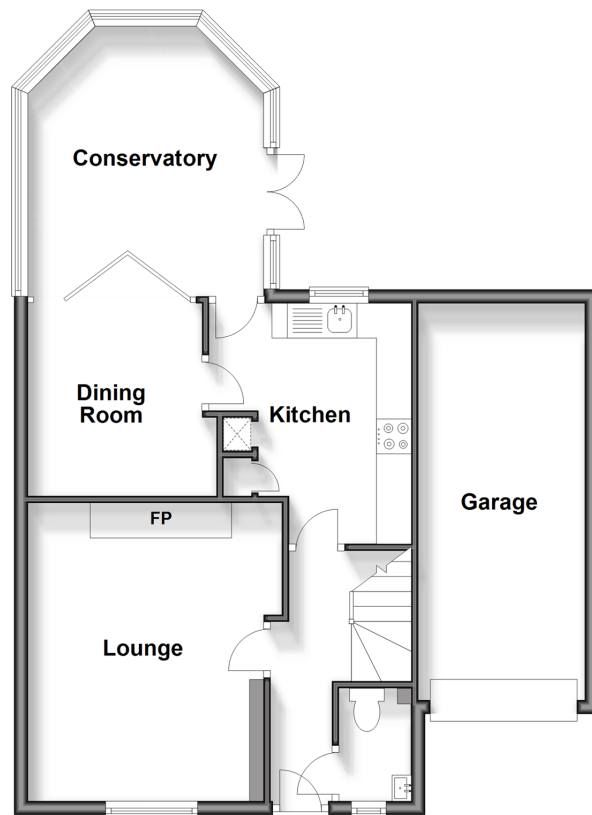
OVER 60?

Secure this property
for up to **59% less!**

 **DOUGLAS
ALLEN**
Helping you move forwards

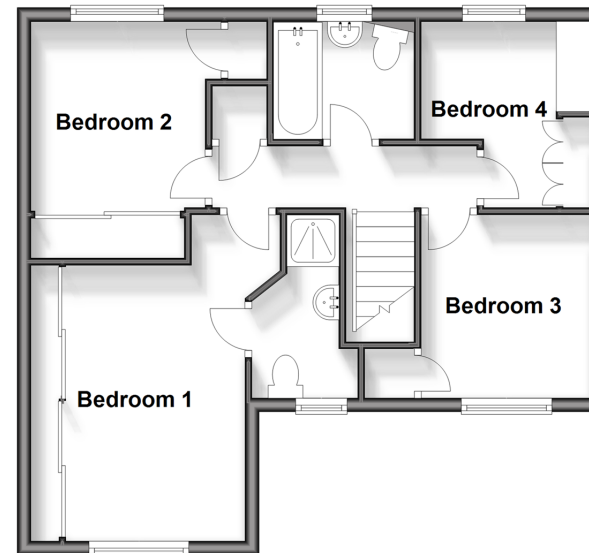
Ground Floor

Approx. 66.1 sq. metres (711.9 sq. feet)



First Floor

Approx. 49.7 sq. metres (534.8 sq. feet)



Accommodation

GROUND FLOOR

Entrance Hallway

Cloakroom

Lounge: 14'3 x 11'5 (4.35m x 3.48m)

Kitchen: 11'3 x 8'10 (3.43m x 2.69m)

Dining Room: 9'6 x 8'2 (2.90m x 2.49m)

Conservatory: 12'10 x 12'6 (3.91m x 3.81m)

Landing

Bedroom 1 : 12'9 x 10'1 (3.89m x 3.08m)

En-Suite Shower Room

Bedroom 2 : 9'2 x 8'2 (2.80m x 2.49m)

Bedroom 3 : 8'8 x 7'11 (2.64m x 2.41m)

Bedroom 4: 8'7 x 7'10 (2.62m x 2.39m)

Bathroom

Rear Garden

Integral Garage

Off Street Parking

FIRST FLOOR

OUTSIDE



Main features

- Additional Conservatory
- Integral Garage
- Beautifully maintained throughout
- Perfect location due to local schools nearby such as Abacus Primary School and Oakfield Primary School
- Great location for access to Wickford town centre and mainline railway station



Nearest Schools

Primary Schools: Abacus Primary 0.4 miles, North Crescent Primary 1.2 miles, Wickford Junior School 1.3 miles

Secondary Schools: Castledon School 1.5 miles, The



Transport Information

Train Stations: Wickford 1.4 miles, Battlesbridge 3.8 miles, Basildon 4.0 miles



Address

Lennox Drive, Wickford, Essex, SS12



Directions

For directions to this property please contact us.



Call Wickford Branch 01268 561287 ■ douglasallen.co.uk



- Legal advice should be taken to verify fixtures/fittings, planning, alterations and/or lease details
- Appliances & services are untested, dimensions are approximate and floor plans are not to scale
- Through a Homewise Home For Life Plan people aged 60+ can secure this property for up to 59% less, by purchasing a Lifetime Lease.



53413039/20250201/GM/AH