



**OVER 60?**

Secure this property  
for up to **59% less!**

**Price**

**£460,000**

**Freehold**

3x  2x  1x 

**Penrith Crescent,  
Wickford, Essex, SS11**

 **DOUGLAS  
ALLEN**  
Helping you move forwards

## Accommodation

### GROUND FLOOR

Entrance Hallway

Cloakroom

Kitchen: 11'11 x 8'2 (3.63m x 2.49m)

Lounge/Dining Area: 25'5 x 13'7 (7.75m x 4.14m)

### FIRST FLOOR

Landing

Bedroom 1: 11'11 x 8'2 (3.63m x 2.49m)

En-Suite Shower Room

Bedroom 2: 9'8 x 8'2 (2.95m x 2.49m)

Bedroom 3: 8'6 x 6'5 (2.59m x 1.96m)

Bathroom

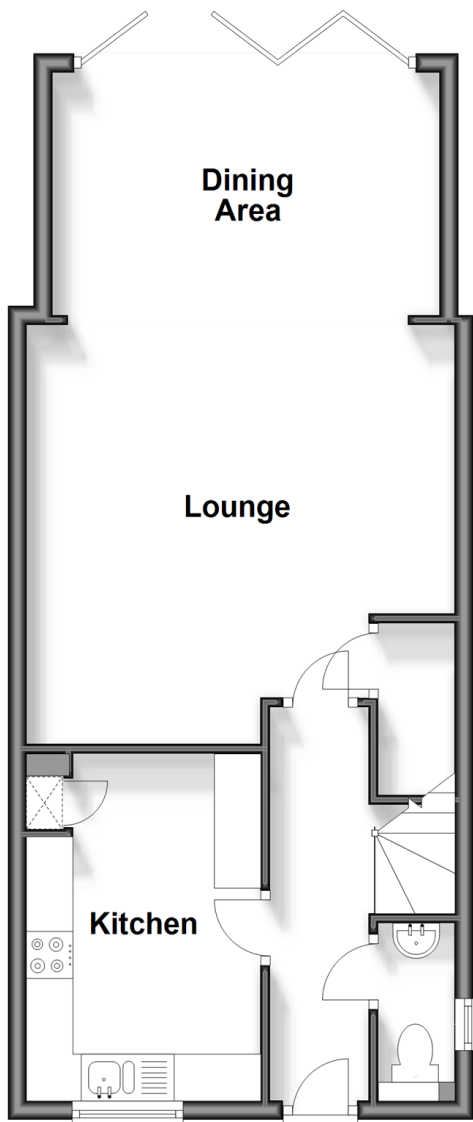
### OUTSIDE

Gym

Rear Garden

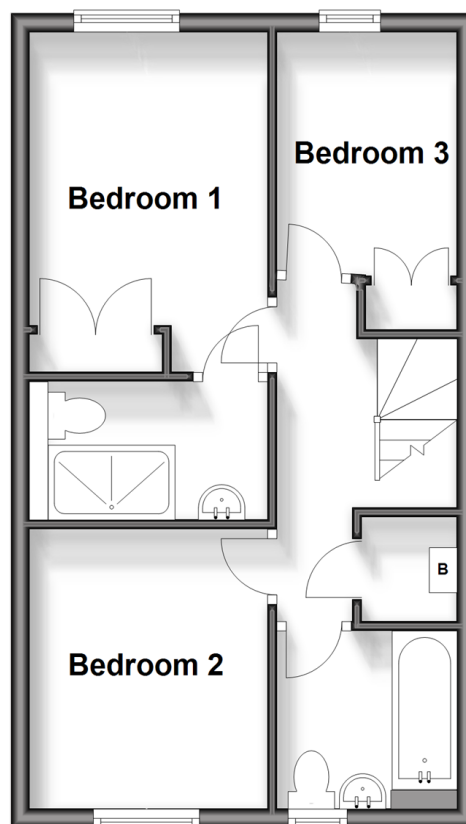
### Ground Floor

Approx. 49.4 sq. metres (532.0 sq. feet)



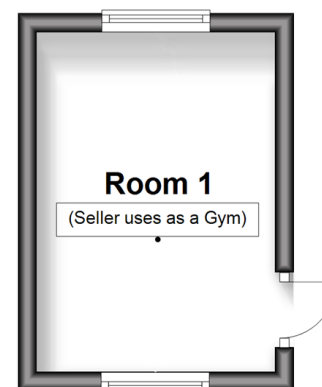
### First Floor

Approx. 38.2 sq. metres (410.9 sq. feet)



### Outbuilding

Approx. 9.3 sq. metres (100.3 sq. feet)







## Main features

- Link detached
- Extended to the rear
- Walking distance to Wickford Train Station
- Garage to the rear accessed via a beautiful low maintenance garden
- Being sold with no onward chain



### Nearest Schools

Primary Schools: Rettendon Primary 1.0 miles, Hilltop Junior School 1.1 miles, Runwell Community Primary 1.6 miles

Secondary Schools: Beauchamps High School 1.1 miles,



### Transport Information

Train Stations: Battlesbridge 0.1 miles, Wickford 1.9 miles, Woodham Ferrers 2.5 miles



### Address

Penrith Crescent, Wickford, Essex, SS11



### Directions

For directions to this property please contact us.





Call Wickford Branch 01268 561287 ■ [douglasallen.co.uk](https://douglasallen.co.uk)



■ Legal advice should be taken to verify fixtures/fittings, planning, alterations and/or lease details ■ Appliances & services are untested, dimensions are approximate and floor plans are not to scale  
■ Through a Homewise Home For Life Plan people aged 60+ can secure this property for up to 59% less, by purchasing a Lifetime Lease.



53412977/20241206/GM/AH