



Price
£375,000

Freehold

2x  1x  1x 

**Glebe Road, Wickford,
Essex, SS11**

OVER 60?

Secure this property
for up to **59% less!**

 **DOUGLAS
ALLEN**
Helping you move forwards



Main features

- Recently repainted and decorated throughout
- Extended to rear
- Popular location within Wickford
- Boarded loft room offering further potential to extend STPP
- Off street parking via a shared driveway with garage in rear garden

Accommodation

GROUND FLOOR

Entrance Hallway

Lounge: 17'0 x 12'0 (5.19m x 3.66m)

Kitchen: 13'8 x 7'8 (4.17m x 2.34m)

Dining Area: 9'8 x 7'6 (2.95m x 2.29m)

Shower Room

Garden Room: 18'9 x 10'1 (5.72m x 3.08m)

Bedroom 1: 11'11 x 9'10 (3.63m x 3.00m)

Bedroom 2: 19'11 x 7'11 (6.07m x 2.41m)

OUTSIDE

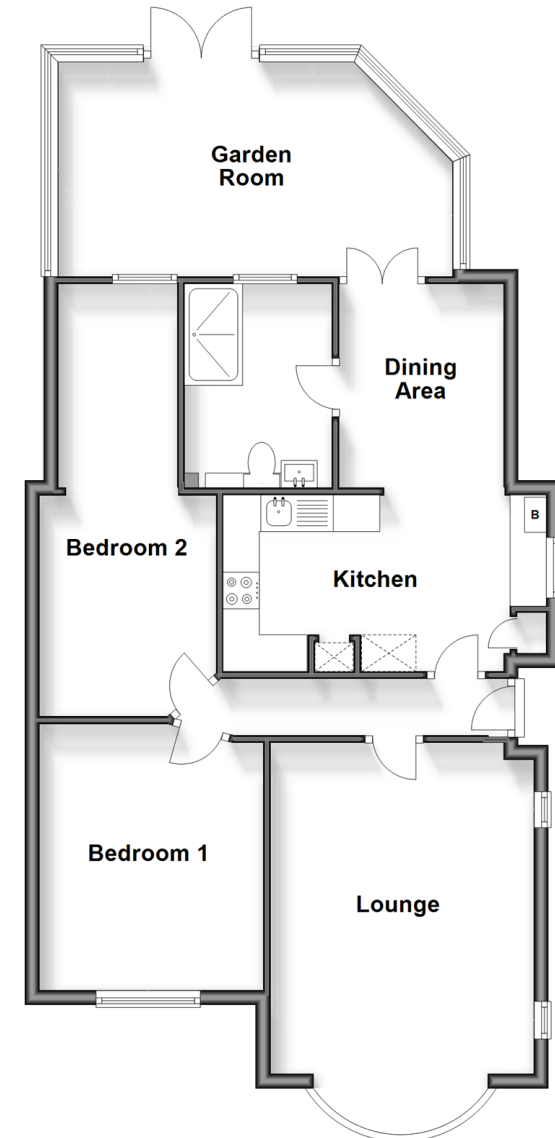
Rear Garden

Garage

Off Street Parking

Ground Floor

Approx. 84.2 sq. metres (906.0 sq. feet)



Call Wickford - 01268 561287 ■ douglasallen.co.uk

- Legal advice should be taken to verify fixtures/fittings, planning, alterations and/or lease details
- Appliances & services are untested, dimensions are approximate and floor plans are not to scale
- Through a Homewise Home For Life Plan people aged 60+ can secure this property for up to 59% less, by purchasing a Lifetime Lease.



53412931/20241112/AH/AH